

SOUTH GLENGARRY

2025 Spring & Summer

COMMUNITY GUIDE

www.southglengarry.com

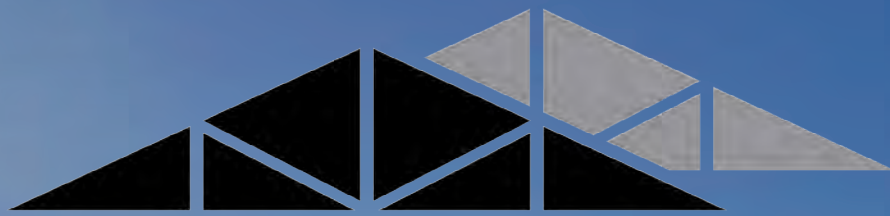
Recreation and Programming
Infrastructure Information
Building and Bylaws

SOUTH GLENGARRY - APRIL 2025

Cover photo by
Richard Pilon

**SOUTH
GLENGARRY**





RESIDENTIAL
COMMERCIAL
AGRICULTURAL

CORNWALL ROOF TRUSS INC.

ROOF & FLOOR TRUSS



SHEDS TO HOUSES TO BARNES + MORE!

Open-Web Floor Joist Systems | Roof Trusses
I-Joists | Steel Roofing | Siding

CONTACT US TODAY!

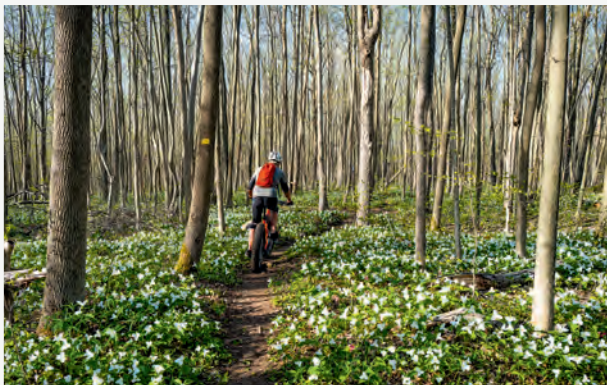
613-932-1416

cornwallrooftruss.com

info@cornwallrooftruss.com

900 Boundary Rd, South Glengarry, ON





Photos by Richard Pilon

WHAT'S INSIDE

Members of Council	4
Department Directory	6
Corporate Services.....	8-9
Community Spotlight.....	10-11
Programming	12-15
Parks, Recreation & Culture.....	16-18
Waste Management	20-21
Planning, Building and Enforcement.....	22-24
Infrastructure	25-27
Water/Wastewater.....	28
Fire Services.....	29
Emergency Services.....	30

SOUTH GLENGARRY COMMUNITY GUIDE 2025 SPRING & SUMMER

Publisher: Richard Mahoney Sales Co-Ordinator: Jennifer Mayer

Media Strategy Specialists: Guy Cote, Ted Conway Graphic Design: Colleen Parette

Published at: 1950 Montreal Road, Unit F101, Cornwall, ON K6H 6L2

WWW.CORNWALSEAWAYNEWS.COM

Published by icimedias (Seaway News). This publication contains information considered accurate at the time of printing. However, the publisher is not responsible for any errors or omissions that may occur. Reproduction in any form is prohibited without the written permission of the publisher.

All ads copyright Seaway News Printed in Canada. GST No. 874372402



EST. 1964

MARLIN

ORCHARDS & GARDEN CENTRE

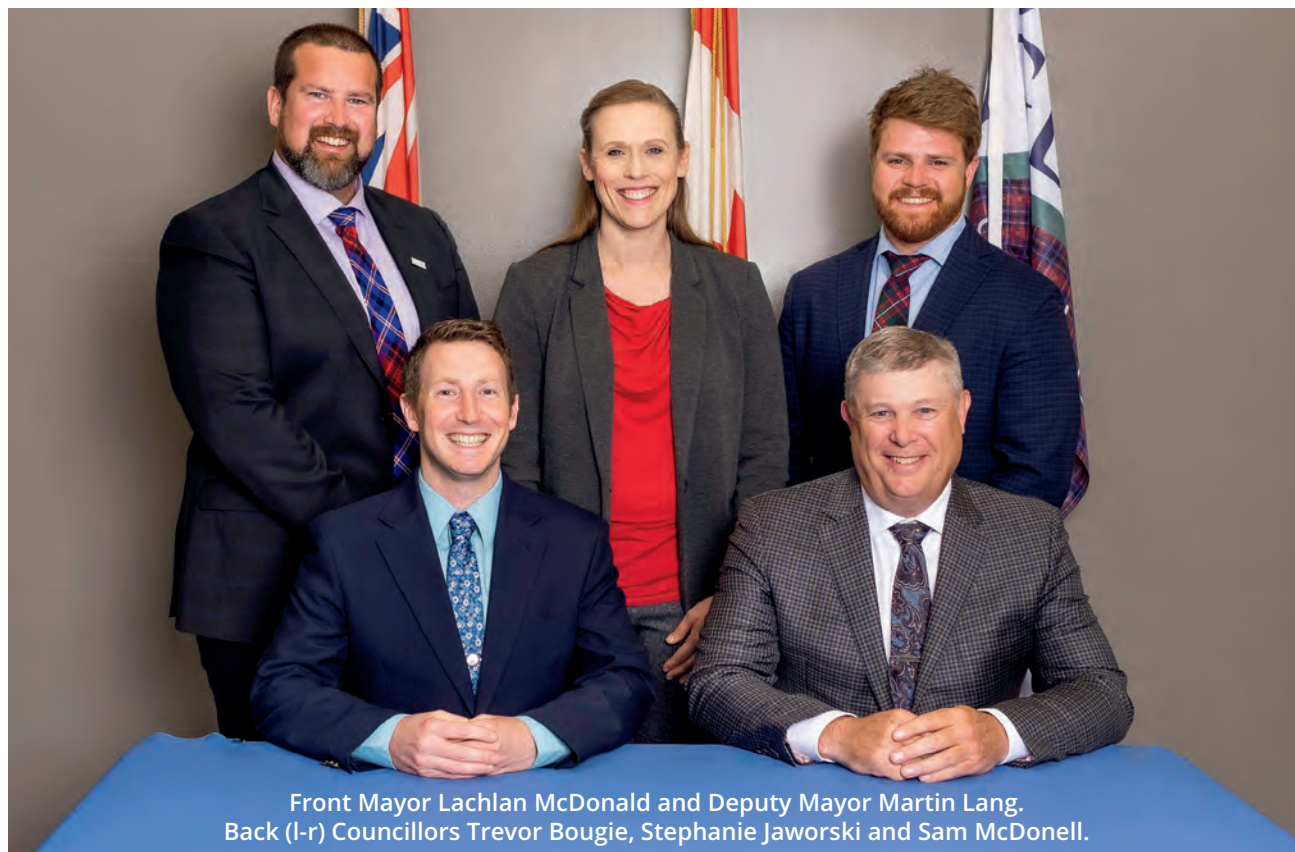
All your **Gardening Needs** as well as
Giftware ♦ Apples ♦ Honey

~ Open March to December ~

6864 Orchard Road

www.marlinorchards.com • 613-931-1213





Front Mayor Lachlan McDonald and Deputy Mayor Martin Lang.
Back (l-r) Councillors Trevor Bougie, Stephanie Jaworski and Sam McDonell.

Mayor Lachlan McDonald
lmcdonald@southglengarry.com

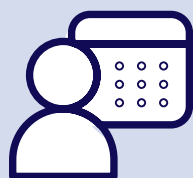
Deputy Mayor Martin Lang
mlang@southglengarry.com

COUNCILLORS

Trevor Bougie
tbougie@southglengarry.com

Stephanie Jaworski
sjaworski@southglengarry.com

Sam McDonell
smcdonell@southglengarry.com



Council Meeting Dates 2025

All meetings begin at 6:30PM

April 14, 28

May 12, 26

June 9, 23

July 14, 28

August 25

September 8, 22

Regular Council Meetings take place on the second and fourth Monday of each month.

If a meeting falls on a holiday, it is rescheduled to the following Tuesday.

Meetings begin at 6:30 PM in Council Chambers at Tartan Hall, located in the Char-Lan Recreation Centre.

Can't attend in person?

Watch the recording on the Township's YouTube channel! (recording not guaranteed - subject to availability of technology)
Simply search "Township of South Glengarry" on www.youtube.com and subscribe to stay informed.



Township of South Glengarry



RIVERDALE TERRACE

Waterfront Retirement Residence

- * All inclusive
- * 24 hour attendant care
- * Medication administration
- * Weekly housekeeping
- * Chef prepared meals
- * Recreational amenities
- * Respite/Recovery



**Call Peter Hickey Community Relations Manager
613-932-3707 ext 703**

1200 Second Street West, Cornwall ON



1125 Second Street West

1146 Montreal Road

108 Second Street East

1 Second Street East

For Rent Because You Deserve The Very Best

**Call Jim Gillett Properties Manager 613-363-4036
or Toll Free 877 524 6327**

www.jcsproperties.ca

Cornwall, Ontario

JCS Properties Inc.

How to contact us



SOUTH GLENGARRY TOWN HALL

6 Oak Street, P.O. Box 220, Lancaster, ON K0C 1N0

Phone: 613-347-1166

Fax 613-347-3411

Website:

www.southglengarry.com

General Inquiries:

info@southglengarry.com

Office Hours:

Monday to Friday
8:30 am - 4:00 pm

CORPORATE SERVICES

Chief Administrative OfficerExt. 2101
Clerk/GM of Corporate Services.....Ext. 2102
Administrative InquiriesExt. 2111
Communications/Website.....Ext. 2104
ReceptionExt. 2109

FINANCE

Treasurer/GM of Finance.....Ext.2113
Accounts ReceivableExt. 2110
Accounts Payable.....Ext. 2105

BUILDING SERVICES

Building InquiriesExt. 2205
Building Permits and Inspections.....Ext. 2205

FIRE SERVICES

Fire ChiefExt. 2441
Deputy Fire ChiefExt. 2442

PARKS AND RECREATION

GM of Parks, Recreation and Culture.....Ext. 2302
Recreation FacilitatorExt. 2301

BY-LAW ENFORCEMENT

Manager of Municipal Law Enforcement.....Ext. 2206

PLANNING SERVICES

GM of Planning, Building and Enforcement.....Ext. 2201
Community PlannerExt. 2207
GIS/Planning TechnicianExt. 2202
Economic Development Officer.....Ext. 2106

AFTER HOURS EMERGENCY CONTACTS

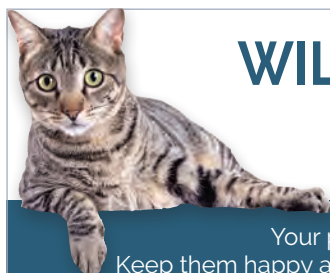
Water/Wastewater.....613-551-4457
Roads.....1-888-310-1122

INFRASTRUCTURE

GM of Infrastructureext. 2502
Technical Supervisorext. 2501
Infrastructure Coordinatorext.2503
Director of Water/Wastewaterext. 2504

WASTE MANAGEMENT

Garbage (HGC)613-933-0202
Recycling (Emterra)1-888-597-1541



WILLIAMSTOWN VETERINARY SERVICES

Allyson Simpson, DVM

Offering premier care for your cherished pets!

Your pets are important members of the family.
Keep them happy and healthy by taking them to Williamstown Veterinary Services.
Our team will ensure your pet is in good health.

Call us today for more information on our services and to make an appointment.

5488 County Road 34, Williamstown, ON **613-347-3930**

Email: office@williamstown-vet.ca **www.williamstown-vet.ca**



EXCITING NEWS

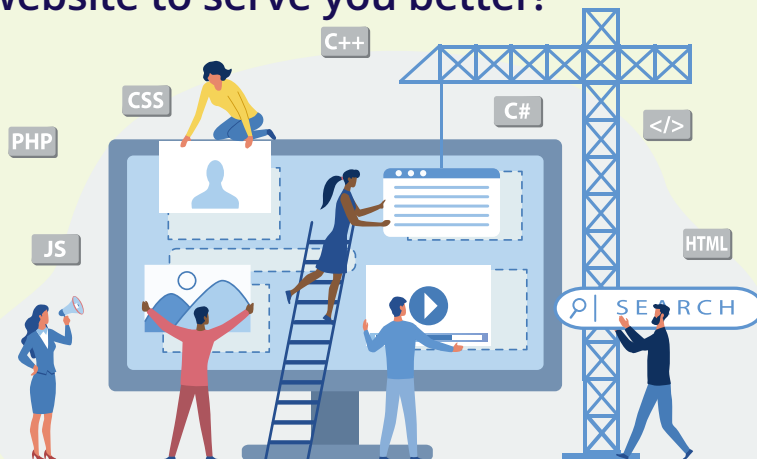
A New Website is Coming!

The Township of South Glengarry is launching
a brand-new website to serve you better!

Our updated site will be:

- Easier to navigate
- More user-friendly
- Packed with useful resources

We can't wait to share this new
digital experience with you
—stay tuned!



Stay tuned for the launch at
www.southglengarry.com

DONE RIGHT ROOFING

IN BUSINESS SINCE 1990

Commercial & Residential Roofing
Flat & Sloped Roofing
Asphalt, Fibreglass & SBS Shingles
Weather-Tite Technology
Maintenance & Repairs
New Construction
Rip & Re-Roof

Fully Licensed and Insured

Insurance Claims
Inspections & Reports

FREE ESTIMATES



Open to the Public Monday-Friday 8am-4pm
820 Campbell St., Cornwall 613-933-2157
info@donerightltd.ca
www.donerightroofingcornwall.ca

*Get the Job
"Done Right"
it pays!!*



NEED ASSISTANCE WITH MUNICIPAL SERVICES?



WE'RE HERE TO HELP!

— YOUR MUNICIPALITY. YOUR SERVICES. YOUR COMMUNITY. —

The Clerk's Department at the Township of South Glengarry is your go-to resource for essential municipal services, including:

- Marriage Licences & Civil Ceremonies
- Commissioning Documents
- Lottery Licences
- Delegations to Council
- Access to Municipal Records

Our team is dedicated to providing professional, friendly, and efficient service to residents and businesses alike.

Visit us at the Township Office



6 Oak Street, Lancaster ON



613-347-1166



clerk@southglengarry.com



www.southglengarry.com

Prescriptions Made Easy

Order – Refill – Transfer – Compounding



PHARMASAVE®

Pharmasave Pharmacie Alexandria
26 Main St. North Alexandria ON
Phone: (343) 474-0113

DREAM SMALL FARM

**ORGANIC
VEGETABLES**

CORNWALL KINSMEN FARMERS MARKET
Sundays 10-2

VANKLEEK HILL FARMERS MARKET
Saturdays 9:30-12:30

AND AT THE FARM
3723 2nd Line Road
Alexandria, ON

CSA SUBSCRIPTIONS & GIFT CARDS AVAILABLE!
www.dreamsmallfarm.ca



Pro-Cert



Weddings

Planning your wedding with our team is a seamless experience with the comprehensive services offered by the township.

Here's how we can assist in making your special day unforgettable:

Marriage Licences

Begin your journey by obtaining a marriage licence directly from our Municipal Office. To ensure personalized service, we recommend scheduling an appointment by calling our office or emailing clerk@southglengarry.com. Remember, licences are issued up to 90 days before your wedding date. The application process requires at least one applicant to submit the form in person, accompanied by two pieces of original identification for each party. The fee for a marriage license is \$125.00.

Ceremony Services

Our Corporate Services Department offers both in-office and off-site wedding officiant services:

- **In-Office Ceremonies:** Held during regular hours (Monday to Friday, 8:30 am to 4:00 pm) at the Municipal Office. The fee is \$150.00, and the ceremony accommodates up to 10 individuals, including the couple, officiant, two witnesses, and up to five guests.

- **Off-Site Ceremonies:** Available during evenings and weekends at your chosen location. The fee is \$350.00, which includes \$150.00 for the ceremony and \$200.00 for the officiant.

Additional Services

For more information and to start planning your wedding with us, visit our website or reach out directly to our Clerk's Department.

We're here to help make your special day truly memorable.

clerk@southglengarry.com



Community Spotlight



Optimist Club of Lancaster

**EMPOWERING YOUTH,
ENRICHING COMMUNITY**



Q: What is the core mission of the Optimist Club of Lancaster, and how do you align your activities with this mission?

A: Our core mission is to provide the children of South Glengarry with support and opportunities to help them learn, grow, and become responsible young adults. Every activity we organize is planned with this mission in mind. All the funds raised through our fundraising events go directly back into the community, benefiting the children and families of South Glengarry. Whether it's through educational programs, recreational activities, or financial support, we are committed to making a positive impact on the next generation.

Q: Can you share some of the most impactful programs or initiatives the club has led over the years, and what kind of difference have they made in the community?

A: Over the years, the Optimist Club of Lancaster has led several impactful programs and initiatives that have made a difference in the community.

We've organized numerous fundraising events to support families in South Glengarry who are facing difficult times or recovering from tragedy. Additionally, we contribute annually to the Knight's of Columbus food baskets, which provide groceries to local families in need.

One of our most rewarding initiatives has been sponsoring Grade 10 students to attend the Central Ontario Leadership Seminars (COLS). The students who have participated in this program have shared how transformative the experience has been in shaping their personal growth and leadership skills.

Q: What are some activities or events the club organizes that the public might not be aware of, and how do these contribute to your overall goals?

A: We organize a variety of events throughout the year that the public might not always realize are part of our efforts to support the community.

In the spring, we host an Easter Egg Hunt in April, followed by the Canada Day Celebrations in July, both held at Smithfield Park in Lancaster. These events are completely free for children and families in South Glengarry.

In the fall, we bring back the Haunted Drive-Thru at Charlottenburgh Park, one of our major fundraisers. The money raised from this event helps us continue offering fun, family-friendly activities throughout the year.

During the holiday season, we organize the annual Christmas Tree Lighting in Lancaster, another significant fundraiser. Funds from selling advertising on the snowmen along the fence go directly toward community initiatives, including:

- Covering ice time at the Char-Lan Recreation Centre for local elementary and high schools
- Hosting bike rodeos to teach elementary students about road safety
- Providing bursaries for graduating students

Beyond these annual traditions, we also host special fundraisers to improve local recreational spaces. Last year, we held an auction to raise money for new playground equipment at Smithfield Park. This year, we're excited to introduce Nibbles & Giggles, a comedy night on March 29th, to support future park enhancements and community programming.

Q: How does the Optimist Club of Lancaster engage with local youth, and what opportunities do you provide for young people to get involved and make a positive impact in their community?

A: We are deeply committed to engaging with local youth through our events and activities, most of which are specifically designed for children. These events are run by our dedicated team of volunteers, who interact directly with young people in the community.

We actively encourage youth involvement and are always looking for student volunteers to help out at our events. For example, at the Haunted Drive-Thru, students can earn volunteer hours by scaring their parents and neighbors, while at Canada Day, they help ensure kids' safety during games and activities.

We also partner with Char-Lan students, who play a key role in guiding younger children through the different stations at our annual Bike Rodeo, teaching them about road safety.

Through these opportunities, young people not only give back to their community but also develop valuable skills and experiences that make a positive impact on both themselves and others.

Q: What do you believe is the biggest challenge or opportunity facing your organization right now, and how are you planning to address it in the future?

A: Right now, one of our biggest challenges is attracting new volunteers. We understand that everyone is busy with work and family commitments, so it can be difficult to find the time to take on additional responsibilities. However, we want the community to know that any amount of time or effort is greatly appreciated. You don't have to commit to every meeting or event—just help out when you can! Every bit of support makes a difference, and we welcome anyone willing to pitch in.

Another challenge we're facing is securing funding. While we are incredibly grateful for the support we receive from the Township of South Glengarry, local businesses, and individual donations, the rising costs have been tough on everyone, and we're noticing a decline in funding year after year. To address this, we're continually brainstorming new, fun ways to raise the funds needed to support our community programming.

Q: What role does volunteerism play in your organization, and how can individuals in the community get involved or support your initiatives?

A: Volunteerism is the backbone of our organization. The Optimist Club of Lancaster is entirely run by volunteers, and every event and activity we organize is made possible through the dedication and hard work of those who give their time, effort, and resources. Without volunteers, we wouldn't be able to offer the programs that benefit our community.

We invite everyone in the community to get involved. Whether you're interested in joining the club or simply helping out at an event from time to time, we'd be thrilled to have you. There are many ways to contribute, and every bit of help makes a difference.

If you're interested in volunteering, you can reach out to us by email at LancasterOptimist@gmail.com, find us on Facebook @ LancasterOptimist, or come to one of our meetings. We meet on the first and third Wednesday of each month from September to June at Smithfield Park in Lancaster. We welcome everyone who wants to help make a positive impact in our community!



If you've ever been to a community event in and around Lancaster, chances are the Optimist Club had a hand in making it happen.

This group of dedicated volunteers is all about supporting local kids and families, whether that's through fun events, safety programs, or improving community spaces.

From hosting bike rodeos to organizing Canada Day celebrations, the Optimist Club of Lancaster always finds ways to bring people together and give back.

Their mission?

Simple—help kids grow, learn, and have a great time doing it.

PROGRAMMING

CAREFOR

All programs take place at Carefor Lan-Char Senior Support Centre,
20 Victoria St, Lancaster ON

MEAL DELIVERY SERVICE:

Nutritious meals for individuals 65+ which qualify through assessment. Home cooked meals delivered to their individuals home 3 times per week.

Contact: Carefor 613-347-1175 Ext: 0

BINGO:

Fun afternoon with others. 5 regular games played, one full card game. Every Monday and Friday afternoon

Contact: Carefor 613-347-1175

FLOWER LETTERS:

A story told through a series of letters.
Fun afternoon of tea and socialization.
Come join the story and great conversation.

Contact: Carefor 613-347-1175

THERABANDS:

Tuesday and Thursday at 9:00am.

Contact: Carefor 613-347-1175

ESSENTRICS EXERCISE:

Tuesday afternoons at 2:30pm and Friday mornings at 10:30. This is a science-based exercise program that strengthens, stretches and tones the full body.

Contact: Carefor 613-347-1175

FAMILY PHYSIO:

Tuesday and Thursday 11:00am.

Very gentle exercises completed on a chair.

Contact: Carefor 613-347-1175

DINERS:

Congregate dining club. Come enjoy a great three course meal with friend and meet some neighbours.

Lunch is served on Wednesdays at 12:00 noon, all for a great price. Must register to attend.

Contact: Carefor 613-347-1175

WELLNESS CLINIC:

Come see our registered nurse and have your blood pressure checked, ask questions and so much more. Call for appointment. No cost.

Contact: Carefor 613-347-1175



YOGA:

Friday Mornings at 9:00am. A gentle yoga class that can be tailored to a chair. A great gentle way to keep moving.

Contact: Carefor 613-347-1175

CRAFTERS:

A great afternoon where you can bring your own or learn how to do different crafts like swedish weaving. Coffee, tea and snack provided.

Contact: Carefor 613-347-1175

FOOTCARE CLINIC:

Footcare done by a registered nurse.

Help maintain your feet and nails.

Help care for corns, calluses and so much more.

Call for appointment. Cost associated.

Contact: Carefor 613-347-1175

BRUNCH:

Every other Monday morning, served at 10:30am.

Menu changes regularly.

Call to register.

Contact: Carefor 613-347-1175

Best Selection of **BIRKENSTOCK** Sandals in Cornwall and SD&G

- WOMEN'S SIZES STARTING AT 35 - MEN'S SIZES UP TO 46

- EVA AND CORK MODELS AVAILABLE



Lindale
SHOES

1380 Second Street East, Cornwall 613-932-2683



PROGRAMMING

MACCULLOCH DANCE CLASS

Martintown Community Centre and the Tartan Hall (Char-Lan Recreation Centre)
This program offers weekly highland dance and step dancing classes.

Contact: Deborah Wheeler at 613-577-3480 or deb_wheeler@live.ca

MARTINTOWN HORTICULTURAL SOCIETY

The Martintown and District Horticultural Society meets on the 1st Wednesday of the month at 6:30 PM, except December, January, February and July. This group is a community-based organization that was established in 1965 for people that enjoy gardening. Guests are welcome to attend monthly meetings, which are full of wonderful gardening information and outstanding speakers.
Contact: Ginny Blair at ginnyblair@gmail.com

WILLIAMSTOWN GREEN THUMBS HORTICULTURAL SOCIETY

Char-Lan Recreation Centre, Tartan Hall
Dates: March 3, April 7, September 3, October 6, November 3, and December 1

Time: 7:00pm

Whether you've been gardening your entire life or you'd like to give it a try, our society is always happy to grow! Join us for door prizes, delicious snacks, and plant-based presentations and workshops - delivered by the community's many experts! Stay connected all year through our special events, excursions, and community initiatives like the Annual Plant Sale, Flower Show, and Garden Tours. Annual Membership Fees: Single (\$20) / Couple (\$35)
Contact: Lia Lindeman, 613-347-3533 or greenthumbswilliamstown@gmail.com
Visit our Facebook page: "Williamstown Green Thumbs"



EARLY ON CHILD AND FAMILY CENTRE

Char-Lan Recreation Centre, Tartan Hall

Time: Tuesday mornings 9:30 to 11:30 am

This program is provided by the Glengarry Inter-Agency Group (GIAG). Come see what a natural environment looks like. You and your child can explore your creativity with art, music, and lots of fun! The GIAG staff members are always there to support with your inquiries or questions on temper tantrums, potty training, or getting your child ready for school, just to name a few.

Age: For children aged newborn to 6 years old with their caregivers.

Contact: www.giag.ca or call 613-577-9987/613-930-9211 ext 231



Summer Art Camps are open for Registration!

Art Classes for all ages and all levels

robin@crayonboxcollective.com

The Crayon Box Studio
5622 County Rd 20, South Glengarry
613-360-4037



Find the class schedule at:
crayonboxcollective.com



PROGRAMMING

MARTINTOWN GOODTIMERS

All program take place in the main hall and the seniors room at the Martintown Community Centre, 4850 County Rd 20, Martintown, ON

EXERCISE CLASS

When: Mondays and Wednesdays at 9:00 am
Low impact but high value cardio and stretching exercises.

Contact: Allyson Barclay 613 528 4663
or martintowngoodtimers@gmail.com

PARTY BRIDGE

When: Mondays at 1:00 pm
For those who enjoy a friendly game. Bridge is a very social mind enhancing game. Come and challenge the cards.

Contact: Stewart MacDonald 613-933-1873
or martintowngoodtimers@gmail.com

DUPLICATE BRIDGE

When: Tuesdays at 12:00 pm
For those players with a more competitive spirit. Always a challenging afternoon.

Contact: Judy Bradacs, 613-528-4427
or martintowngoodtimers@gmail.com

SHUFFLEBOARD

When: Thursdays at 9:00 am
A low energy, but challenging game of strategy.

Contact: Wayne McNaughton 613 528 4653
or martintowngoodtimers@gmail.com

YOGA

When: Wednesday 1:00pm-2:00pm and
Fridays from 930am-10:30am

Contact: martintowngoodtimers@gmail.com



PICKLEBALL

When: Mon, Wed and Friday 10:00am-1:00pm
A cross between badminton and tennis provides great exercise for older players.

Contact: Jennifer Monk at 613 528 0128
or martintowngoodtimers@gmail.com

RUG HOOKERS

The art of traditional rug hooking, to learn new skills and techniques, to share our knowledge with each other and the public and to have fun.

When: 2nd and 4th Thursday of the month
from 9:00am-1:00pm.

Contact: Ginny Blair 613-528-4679
or martintowngoodtimers@gmail.com



GUARDIAN FENCING
CORNWALL'S FENCING SPECIALISTS

GET 5% OFF SPRING BOOKINGS!

Are you looking to enhance security, increase privacy or enhance the aesthetics of your property?

WE HAVE THE PERFECT FENCING SOLUTION FOR YOU!

Locally Owned and Operated
Satisfaction Guaranteed
Years of Experience
Fences Built To Last

613-407-0200
Guardianfencingcornwall.ca

Home hardware building centre

PAINT: Over 1,000 Interior/Exterior PAINT and STAIN COLOUR CHIPS to choose from!

LUMBER: With the right materials, and at the right price you can get your list done in no time.

Hours: Monday to Friday 7 am to 6 pm
Saturday: 8 am to 5 pm; Sunday: Closed

3524 County Road 34, Alexandria
613-525-3151

SD&G FITNESS: Offering weekly classes at the Martintown Community Centre. Next session runs from September 8 through December 17, a 15-week program

Contact: sdg-fitness.com
marilynparisien@live.com or 613-932-9168

BODY PRECISION

A classic body-toning workout designed to build and shape lean and strong muscles targeting hips, thighs, glutes, core and upper body. This class is designed to allow everyone to workout at their own level of comfort and ease with great results. Mondays at 6pm.

30-30

This class is a perfect mix of cardio and toning offering balance results. The first 30 minutes of the workout is cardio and the second 30 minutes is full body toning. Wednesdays at 6pm.

Choose to enjoy these classes in the comfort of your home, via Zoom, or in person at the hall.

PROGRAMMING CHAR-LAN DISTRICT HIGH SCHOOL

All programs take place at
Char-Lan District High School
in the Gymnasium
19743 County Rd 17, Williamstown, ON

BADMINTON:

Wednesdays, 7:00-9:00pm
Each participant is expected
to bring their own racquet and shuttlecocks.
Program runs till the end of May.
Contact: South Glengarry Recreation Department,
613-347-1166 ext. 2301

PICKLEBALL:

Mondays, 7:00pm-8:30pm.
Program runs until the end of May.
Contact: South Glengarry Recreation Department,
613-347-1166 ext. 2301

BASKETBALL:

Thursdays 6:00p.m. – 8:00p.m.
Program runs until the end of May.
Contact: Jeff and Eileen MacDonell
southglengarrybasketball@gmail.com

CHAR-LAN MINOR HOCKEY ASSOCIATION

ARE YOU READY TO HIT THE ICE THIS SEASON?
WHETHER YOU'RE A SEASONED PLAYER OR JUST
STARTING OUT, CHAR-LAN MINOR HOCKEY
WELCOMES ALL SKILL LEVELS! REPRESENTING SOUTH
GLENGARRY, WE OFFER A FUN AND SUPPORTIVE
ENVIRONMENT WHERE HOCKEY PLAYERS CAN GROW,
IMPROVE, AND MAKE LIFELONG MEMORIES.

SEASON RUNS SEPTEMBER TO MARCH



<https://leagues.teamlinkt.com/clmha>



DR. ALI KARKRI, D.M.D., M.Sc.
Orthodontist Specialist



COMPLETE ORTHODONTICS
For children, adolescents and adults
 

FREE CONSULTATIONS

 **450 912-9185**

 **info@orthodrkarkri.com**

 218, rue Principale, St-Zotique, Québec, J0P 1Z0

5 km
from the
Ontario line


DECOSTE REALTY INC.

Real Estate Brokerage

RICHARD DÉCOSTE

Broker of Record

28 Main St. North, Alexandria
613-525-0325
613-872-3335
Richard.decoste@gmail.com



Seaway News

WE'VE MOVED!

Our new location is
1950 Montreal Road, Unit F101
INSIDE THE DEV CENTRE

www.cornwallseawaynews.com

MAXVILLE FARM MACHINERY LTD

MAXVILLE FARM MACHINERY LTD
2508 County Road 20, P.O. 217, Maxville, ON, CA, K0C1T0
B: 613-527-2834 ~ F: 613-527-2703 ~ Toll Free: 1-888-371-0336
maxvillefarmmachinery.com E: info@maxvillefm.com



Located in the Eastern Ontario agricultural community for over four decades, MFM is an authorized New Holland Dealer.

We offer a wide selection of new and used farm machinery, an extensive selection of parts, and an experienced service department.

Together, our team is dedicated to helping you find the parts & equipment to meet your specific needs and maximize your productivity with the least amount of downtime.

Visit us at our dealership or give us a call today!






OUR PRODUCT PARTNERS	
VERSATILE MK MARTIN SCHULTE KUHN WALLENSTEIN POTTINGER FARM KING BUHLER	HORST WAGONS WIFO FRANSKARD MARKET H&S QUICKE TUBELINE STOLL JBM

..AND MANY MORE!

HAVE A QUESTION ABOUT YOUR GUIDANCE SYSTEM? WE CAN HELP!



PARKS

EMPEY-POIRER PARK

6086 Vine St, Williamstown ON, K0C 2J0
(Glendale Subdivision)
Children's play structure.

GREEN VALLEY COMMUNITY PARK

4159 MacKinnon Rd, Green Valley ON, K0C 1L0
Children's play structure. 2 outdoor pickleball courts/tennis courts, 1 Basketball Court.

GLEN WALTER REGIONAL PARK

6618 Glen Walter Park Rd, Glen Walter ON K6H 5R5
Children's play structure, Walking/biking track, 6 outdoor pickleball courts, 3 tennis courts, 3 full size soccer fields
1 volleyball court, Pavilion, outdoor washrooms.

MARTINTOWN COMMUNITY PARK

5116 Nine Mile Rd, Martintown ON, K0C 1S0
1 baseball field, Outdoor pickleball courts,
Children's play structure, Basketball nets.

NORTH LANCASTER OPTIMIST PARK

4837 2nd Line Rd, North Lancaster ON, K0C 1Z0
Children's play structure, 1 full size soccer field.

PAUL ROZON MEMORIAL PARK

19715 John St, Williamstown ON, K0C 2J0
Splash Pad, Children's play structure
1 baseball field, Splash Pad, outdoor washrooms.

JACK DANAHER HALL PARK

6095 Florence St, Bainsville ON, K0C 1E0

SMITHFIELD PARK

34 MacDonald St, Lancaster.
Outdoor basketball court, Full size Soccer Field
Children's play structure, Pavilion.

KENNETH BARTON SENIOR PARK

4850 Country Rd 20, Martintown ON K0C 1S0
Open greenspace directly behind the Martintown Community Centre and along the Raisin River.
Passive park with bocce ball court, water access and small craft launch.

GLEN WALTER WATERFRONT PARK

18270 County Rd 2, Glen Walter ON K0C 1N0
Passive park with bike parking, repair station and seating along the waterfront.

LIBRARY PARK

Directly behind the SDG Library in Lancaster at
195 Military Rd, Lancaster ON K0C 1N0
Small greenspace with benches and Cenotaph.

GREAT LAKES WATERFRONT TRAIL

Begins in Lancaster and stretches West, over 75km along or close to the shoreline of the St Lawrence River, ending in Morrisburg ON. Within the boundaries of South Glengarry (Lancaster to Glen Walter), the St Lawrence Recreational Path is a 21km "designated" paved shoulder along County Rd 2

Contact Information: Cornwall Tourism 613-933-0074 or info@cornwalltourism.com

***Visit website for field and court rental rates.**



FACILITY RENTALS

CHAR-LAN RECREATION CENTRE

19740 John St, Williamstown ON, K0C 2J0

Arena Floor Surface: Available May to mid August 2025

Ice Surface: Available September to March.

TARTAN HALL WITHIN THE CHAR-LAN RECREATION CENTRE

Capacity: Seated maximum capacity 130
Licensed facility equipped with a full kitchen, restrooms, tables, chairs, Wi-Fi and audio system.

Type of Rental: Available to rent for private events.

Not available the months of July and August due to programming

MARTINTOWN COMMUNITY CENTRE

4850 County Rd 20, Martintown ON, K0C 1S0

Capacity: Seated maximum 100
Non-Licensed facility equipped with a full kitchen, restrooms, tables, chairs. The outdoor portion of the facility includes a patio area and bocce ball court.

Type of Rental: Available to rent for private events.

PAUL ROZON MEMORIAL PARK BUILDING

19715 John St, Williamstown ON, K0C 2J0

Capacity: Seated capacity of 30
Non-Licensed facility equipped with restrooms, tables, chairs, and a small kitchen with a microwave.

Type of Rental: Available to rent for small events.

Not available the months of July and August due to programming

SMITHFIELD PARK BUILDING

Capacity: Seated capacity of 20

Non licenced facility, equipped with restrooms, tables, chairs, and equipped with a small kitchen.

Type of Rental: Available to rent for small events.

NORTH LANCASTER OPTIMIST HALL

4837 2nd Line Rd, North Lancaster ON, K0C 1Z0

Capacity: Seated maximum of 50
Non-Licensed facility equipped with a full kitchen, restrooms, tables and chairs.

Type of Rental: Available to rent for private events.

www.southglengarry.com

GREEN VALLEY COMMUNITY CENTRE

4159 MacKinnon Rd, Green Valley ON, K0C 1L0

Capacity: Seated capacity of 100

Non-Licensed facility equipped with a full kitchen, restrooms, tables, and chairs.

Type of Rental: Available to rent for private events.

**For information on Facility Rentals please contact the Parks, Recreation and Culture Department
613-347-1166 Ext 2301**

***Visit website for facility rates.**

ACCESS BARS

Séances privées Private Sessions
Formation d'un jour/One-day training

La technique de bien-être la plus relaxante et la plus déstressante qui peut changer votre vie.
The most relaxing, de-stressing, well-being technique that can change your life.

www.bienetrealexandriawellness.com

bien-être
Alexandria
wellness

RAISIN REGION CONSERVATION AUTHORITY

2025 RAISIN RIVER CANOE RACE

The race is one of the longest races in eastern Ontario; an immensely popular springtime event that attracts hundreds of participants, who paddle a 30km racecourse.

Date: Saturday, April 12, **Time:** Race starts at 10:30 am

Location: St. Andrews West to Williamstown

Contact: info@rrca.on.ca or (613) 938-3611

RRCA FAMILY FISHING AFTERNOON

Taking place on the shore of the St. Lawrence River, just south of Gray's Creek Conservation Area, the free event lets young anglers and their families try their hand at this popular sport, learn about the region's fish species, practice proper fishing techniques, and simply enjoy spending time in nature together.

Date: July 4, 2025 **Time:** 10 a.m. - 2 p.m.

Location: Just south of Gray's Creek Conservation Area, 18045 County Road 2, Cornwall, ON

Contact: info@rrca.on.ca or (613) 938-3611

ECO FRIENDS CAMP

A week-long day camp that challenges participants to learn about science and the natural environment in a hands-on, minds-on manner. Activities for children ages 7-10, include a combination of hiking, frog catching, pond dipping, games, crafts, scientific experiments and much more.

Dates: July 28-August 1

Location: Cooper Marsh Conservation Area, 20020 County Road 2, South Glengarry

Contact: odevine@riverinstitute.ca



CONSERVATION AREAS

Cooper Marsh Conservation Area The Raisin Region Conservation Authority (RRCA) actively maintains, protects, enhances and restores this natural area, which features nature trails and boardwalks, viewing blinds and towers, a picnic area, self-guided tour, and an interpretive centre. During the summer months, visitors can drop by the Marsh's Visitors Centre to borrow binoculars, insect collection kits, and an assortment of informative guides and books to enhance their nature hike experience. All items are lent out free of charge. From June to August, RRCA staff offer free guided weekend strolls, providing visitors with a chance to learn about this important wetland and the plants and animals that call it home!

Location: 20020 County Road 2, South Glengarry

Contact: info@rrca.on.ca or (613) 938-3611

Charlottenburgh Park offers a beach, boat launch, campground, nature trails, and more. Surrounded by trees and wildlife, serviced and un-serviced lots offer campers an opportunity to relax and connect with nature. The Park's nature trail system is open year-round at no cost.

Location: 19788 County Road 2, South Glengarry

Contact: info@rrca.on.ca or (613) 938-3611

Gray's Creek Conservation Area is located just minutes east of Cornwall; it offers over 43 hectares of natural landscape. 3.2 kilometres of meandering trails are open year round, allowing users to enjoy nature in all its seasonal settings. Explore the trails and keep an eye out for the wide variety of animals, songbirds, amphibians and waterfowl that inhabit this Conservation Area. Geocaches are also waiting to be found within Gray's Creek. Visitors can enjoy cycling, hiking and walking their leashed pets both on the nature trails and the paved bike path. Gray's Creek also features a self-guided arboretum tour, a marina, and a picturesque family park with picnic area, play structure, and charcoal barbecues for your convenience.

Location: 18045 County Road 2, Cornwall

Contact: info@rrca.on.ca or (613) 938-3611



PORTABLE RESTROOM RENTALS



**Available for Construction Sites,
Weddings and All Occasions.**

613-528-0606

www.glengarryouthouses.com

STAY INFORMED, STAY CONNECTED!



The Township of South Glengarry is committed to keeping you up to date on everything happening in YOUR community!

Along with our website
www.southglengarry.com

we actively share news, updates,
and events on social media.

Follow us here:



@TownshipofSouthGlengarry



@SouthGlengarry



@south_glengarry



@townshipofsouthglengarry4658

JOIN THE CONVERSATION! LIKE, FOLLOW, AND ENGAGE WITH US TO STAY CONNECTED TO YOUR TOWNSHIP.



*Proudly offering
quality skating
instruction
to our community
for 50 years*

**2024 SKATE CANADA
NATIONAL CLUB
AWARD WINNER**

Programs for all ice sports,
all ages and all abilities.

- Pre-CanSkate
- Adult/Teen Skate
- STARSkate
- Adaptive Skating

Programs run from
September to March

CHAR-LAN SKATING CLUB

Williamstown, Ontario

Visit our website for more information about our programs
www.charlanskatingclub.com

Everything for the horse 'n rider!
Western & English

- Cowboy boots
- Shirts, jeans
- Jackets, vests
- Tees, hoodies
- Hats & helmets
- Belts, buckles
- Jewelry
- Giftware
- Toys
- Horse wear
- Products
- Saddles
- Tack



BOB-T TACK SHOP

OPEN DAILY 10am TO 5pm

Across from Flying J in LANCASTER, ON

613-347-7459

www.bobttackshop.ca



SOUTH GLENGARRY

2025 Waste Collection Calendar



SPECIAL COLLECTIONS



Christmas Tree Collection

Week of January 6-10 and 13-17 on your regular scheduled collection day. Remove all decorations and tree bags.



Leaf & Yard Waste Collection

Weekly from May 5 to November 7 on your regular scheduled collection day.



Large Item Pick Up

Week of May 26 on your regular scheduled collection day.



Landfill Closed



Landfill Open



Township Office Closed



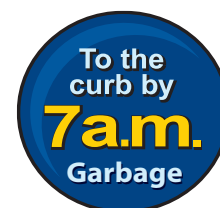
Holiday

Collection is a day later this week.



Hazardous Waste Day Event

September 20, 2025 - Fairview Rd.



WEEKLY GARBAGE LIMIT - 2 Bags



50 LBS PER BAG

NOTE: Any garbage bag over the 2 bag limit will require a Bag Tag. Thank you for respecting our bag limit.

BAG TAGS Available to Purchase
Price increase to \$3 per Bag Tag

Municipal Office
6 Oak Street,
Lancaster, ON K0C 1N0
Monday to Friday:
8:30 am - 4:00 pm
OR Online



SCAN ME

REPORT a Missed Collection
www.southglengarry.com



SCAN ME

For more detailed information on waste collection, please visit our website under **Living Here/ Garbage**.

The Township of South Glengarry's recycling program will be managed by Circular Materials as of January 1, 2025.

Circular Materials is the administrator of the common collection system and a not-for-profit organization that is committed to building an efficient and effective recycling system in Ontario. During the transition, there will be no change to the materials you currently recycle.

Learn more: circularmaterials.ca/ON

January 2025						
SUN	MON	TUE	WED	THU	FRI	SAT
			1	2	3	4
5	6	7	8	9	10	11
12	13	14	15	16	17	18
19	20	21	22	23	24	25
26	27	28	29	30	31	

February 2025						
SUN	MON	TUE	WED	THU	FRI	SAT
						1
2	3	4	5	6	7	8
9	10	11	12	13	14	15
16	17	18	19	20	21	22
23	24	25	26	27	28	

March 2025						
SUN	MON	TUE	WED	THU	FRI	SAT
						1
2	3	4	5	6	7	8
9	10	11	12	13	14	15
16	17	18	19	20	21	22
23	24	25	26	27	28	29
30	31					

April 2025						
SUN	MON	TUE	WED	THU	FRI	SAT
		1	2	3	4	5
6	7	8	9	10	11	12
13	14	15	16	17	18	19
20	21	22	23	24	25	26
27	28	29	30			

May 2025						
SUN	MON	TUE	WED	THU	FRI	SAT
				1	2	3
4	5	6	7	8	9	10
11	12	13	14	15	16	17
18	19	20	21	22	23	24
25	26	27	28	29	30	31

June 2025						
SUN	MON	TUE	WED	THU	FRI	SAT
1	2	3	4	5	6	7
8	9	10	11	12	13	14
15	16	17	18	19	20	21
22	23	24	25	26	27	28
29	30					

www.southglengarry.com • info@southglengarry.com • 613-347-1166

**After Hours: County Road Emergency 1-888-310-1122 • Township Roads Emergency 613-930-3445
Water/Wastewater 613-551-4457**

LEAF & YARD WASTE

- Place at the curb with regular waste by 7 am.
- Unlimited weekly between May 5 to November 7, 2025.
- Must be contained in paper bags or reusable containers.
- Leaf and yard waste is not composted, the material goes directly into the landfill. Mulch or mow your leaves on-site if possible. If you wish to compost, contact the Township office to purchase a composter. (80 gallon / 300 litres - limited quantities available).
- Sticks and branches up to 4ft are accepted, as long as they are bundled and under 50 lbs.
- Leaf and yard waste can be brought to the landfill for FREE.

Landfill Details

- Vehicles must have a valid registration.
- Registration cards can be purchased at Township office and on site.
- **HAZARDOUS WASTE NOT ACCEPTED.**
- All South Glengarry residents will receive 2 free visits to the landfill during the 2025 season. Please visit our website for information on limitations and requirements.
- The North Lancaster Landfill site (4580 2nd Line Road) accepts waste materials from June 1 to September 30 on Thursdays and Saturdays from 9 am to 5 pm.
- The Beaver Brook Road Landfill site located at 19281 Beaver Brook Road, (east of Chapel Road) accepts waste materials from October 1 to May 31 on Thursdays and Saturdays from 9 am to 5 pm.

LARGE ITEM COLLECTION

Special curbside collection of large items **ONLY**, week of May 26 on your regular scheduled collection day.



- **Not all items are accepted**, visit the Township website for details. If you are uncertain if an item is acceptable, contact the Infrastructure Department at the Township before placing curbside.
- All refrigeration units must be decommissioned and tagged properly.

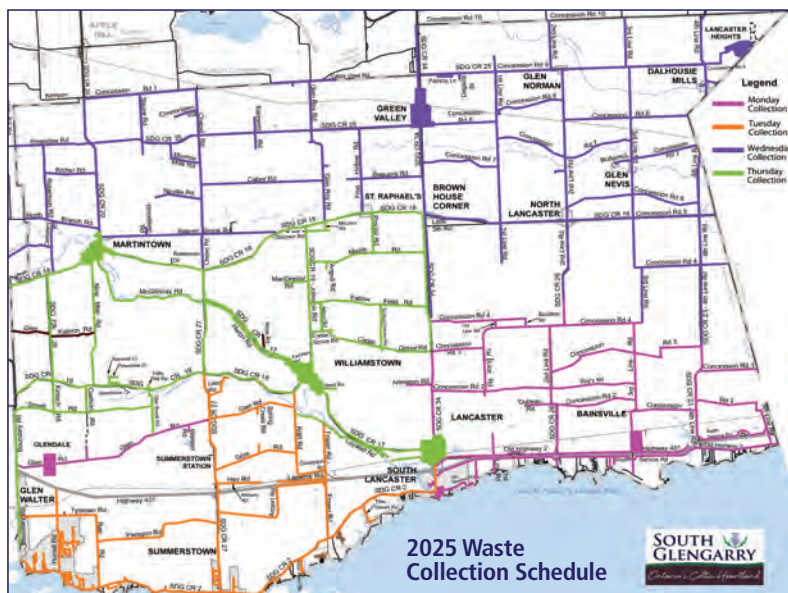
Large items can also be disposed of at the landfill sites – tipping fees will be incurred.

E-WASTE AND HOUSEHOLD HAZARDOUS WASTE

- Hazardous waste material is not accepted at the landfills in South Glengarry, but the City of Cornwall offers our residents a free way to dispose of hazardous material free of charge from April to November. Bring hazardous waste to 2590 Cornwall Centre Road. For days the depot is open, visit www.cornwall.ca for a list. Accepted materials, requirements, restrictions, and depot hours go to Garbage, Recycling, Landfill on the Cornwall site.
- Drive Thru Drop Off of Hazardous Waste and E-Waste will take place Sept. 20 from 8 am to 12 pm on Fairview Rd. Please visit our website for a list of accepted and not accepted items.
- E-Waste is accepted for free at the Township Landfills during operational hours. Residents also have the option to bring E-Waste to the Cornwall Depot at no charge, Monday to Saturday 7:30 am to 4:30 pm.

Batteries

- Accepted for recycling at 6 Oak Street.



July 2025						
SUN	MON	TUE	WED	THU	FRI	SAT
		1	2	3	4	5
6	7	8	9	10	11	12
13	14	15	16	17	18	19
20	21	22	23	24	25	26
27	28	29	30	31		

August 2025						
SUN	MON	TUE	WED	THU	FRI	SAT
					1	2
3	4	5	6	7	8	9
10	11	12	13	14	15	16
17	18	19	20	21	22	23
24	25	26	27	28	29	30
31						

September 2025						
SUN	MON	TUE	WED	THU	FRI	SAT
	1	2	3	4	5	6
7	8	9	10	11	12	13
14	15	16	17	18	19	20
21	22	23	24	25	26	27
28	29	30				

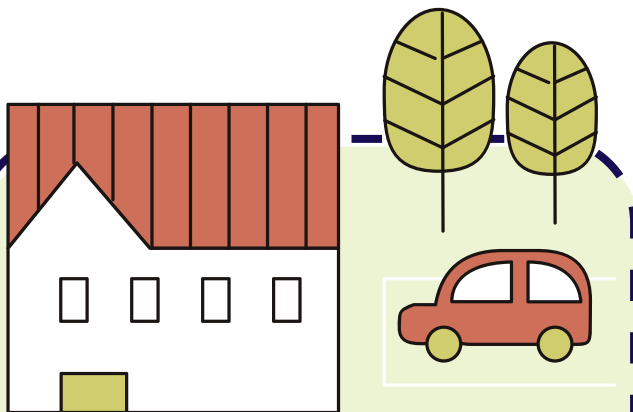
October 2025						
SUN	MON	TUE	WED	THU	FRI	SAT
			1	2	3	4
5	6	7	8	9	10	11
12	13	14	15	16	17	18
19	20	21	22	23	24	25
26	27	28	29	30	31	

November 2025						
SUN	MON	TUE	WED	THU	FRI	SAT
						1
2	3	4	5	6	7	8
9	10	11	12	13	14	15
16	17	18	19	20	21	22
23	24	25	26	27	28	29
30						

December 2025						
SUN	MON	TUE	WED	THU	FRI	SAT
	1	2	3	4	5	6
7	8	9	10	11	12	13
14	15	16	17	18	19	20
21	22	23	24	25	26	27
28	29	30	31			

SOUTH GLENGARRY • www.southglengarry.com • info@southglengarry.com • 613-347-1166

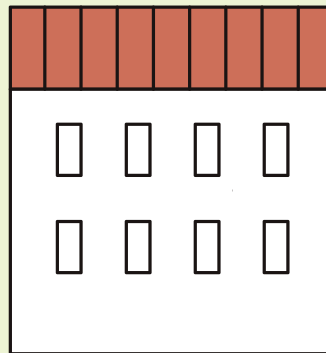
NEW SEVERANCE POLICIES



Are you considering severing your land?



**FOR
SALE**



The Township of South Glengarry is pleased to inform you that policies for land severances on lands designated Rural District have been recently updated opening up opportunities to create new lots.

Whether for a new home, investment opportunity, or to create a building lot to sell, we encourage you to reach out to our Planning Department for expert guidance and support throughout the process.

Contact us today to learn more about how we can help you navigate the severance process and bring your land vision to life.

For more details, please contact
planning@southglengarry.com
or give us a call to find a time
to come meet in person.

Township of South Glengarry FENCE REGULATIONS

Fences in Residential and Rural zones with a residential use

Fences in rear and interior side yards

- a) The maximum height of a fence in a rear or side yard shall be 2.0 m.
- b) In the case of a corner lot where a rear yard abuts a front yard of an adjacent lot the maximum height of a fence shall be 1.0 m in height.

Fences in front and exterior side yards

- a) The maximum height of a fence located in a front or exterior side yard shall be 1.0 m.

Fences in Non-Residential zones

- b) The maximum height of a fence located in a non-residential zone shall be 3.0 m.
- c) The maximum height of a fence located within a 6.0 m setback of the front property shall be 1.2 m.
- d) The maximum height of a fence that encloses a sports field or court shall be 4.25 m.



Privacy Screens

- a) Where a privacy screen is located on a raised deck or platform it shall be less than 2.6 m in height.

Pool Enclosures

- a) Where a fence is located on a property for the purpose of enclosing an above ground pool, in-ground pool, artificial pond, hot tub, or other similar bodies of water, it shall be in compliance with the Township's Pool Enclosure By-law and requires a permit.

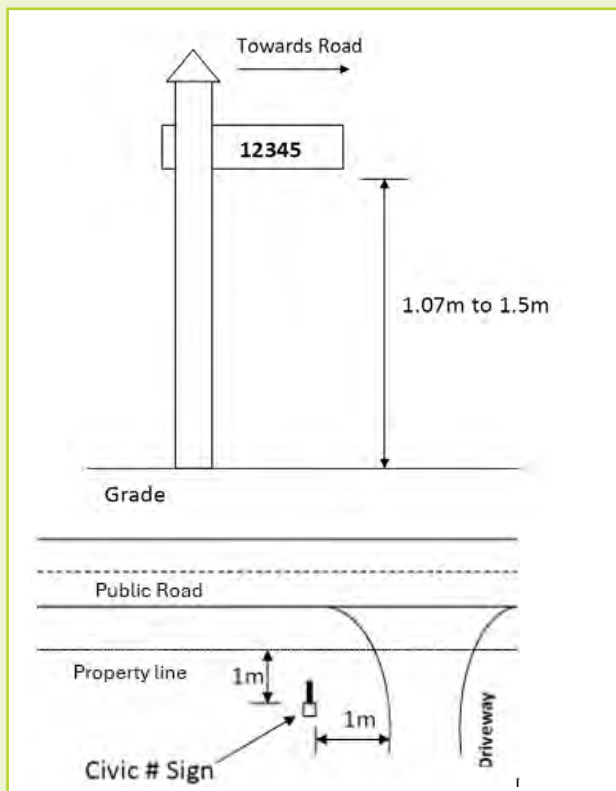
Is your civic address visible?

A properly displayed and maintained civic address helps emergency responders locate your property quickly in case of an emergency, saving valuable time.

Where to Post Your Civic Number

- The civic blade and post should be installed not more than 1m from the property line abutting the street and not more than 1m from the main driveway or entrance to the property.
- The bottom of the civic number blade should be between 1.07m and 1.5m from the ground.
- The blade must be visible from both directions of travel on the road.
- Numbers on the civic blade must read from left to right and be made from a reflective white material on a reflective blue backing for clear visibility, especially at night.

Civic blades and posts must be approved and obtained through the municipal office.
If you would like to order a new civic blade or post (subject to applicable fees), or if you have any questions, please contact our building department at permits@southglengarry.com or 613-347-1166 ex.2205.



Septic System Basics

Did you know that septic systems are the responsibility of the homeowner? It is up to you to keep your system working properly to protect your environment, your health and your investment.

Septic systems are onsite wastewater treatment units that fulfill the role of municipal sewers in rural areas. Anything that goes down the drain — every shower drip and every toilet flush — flows to the septic system. Septic systems, generally speaking, are comprised of a tank, a network of pipes and billions of organisms that process your waste.

Septic systems need space to work. To work effectively, they need to be a safe distance from wells, watercourses, trees, pools, sheds, decks and other amenities. Be sure to protect your system by maintaining minimum separation distances (Figure 12).

When properly designed, constructed and maintained, a septic system should provide long-term, effective treatment of your household wastewater. If you take good care of your system, you will save time, money and worries involved in replacing a failed system. Failed systems can be hazardous to your health and the environment. It can degrade water supplies, reduce your property value and be expensive to repair or replace. The following are some valuable tips to ensure the longevity of your system.

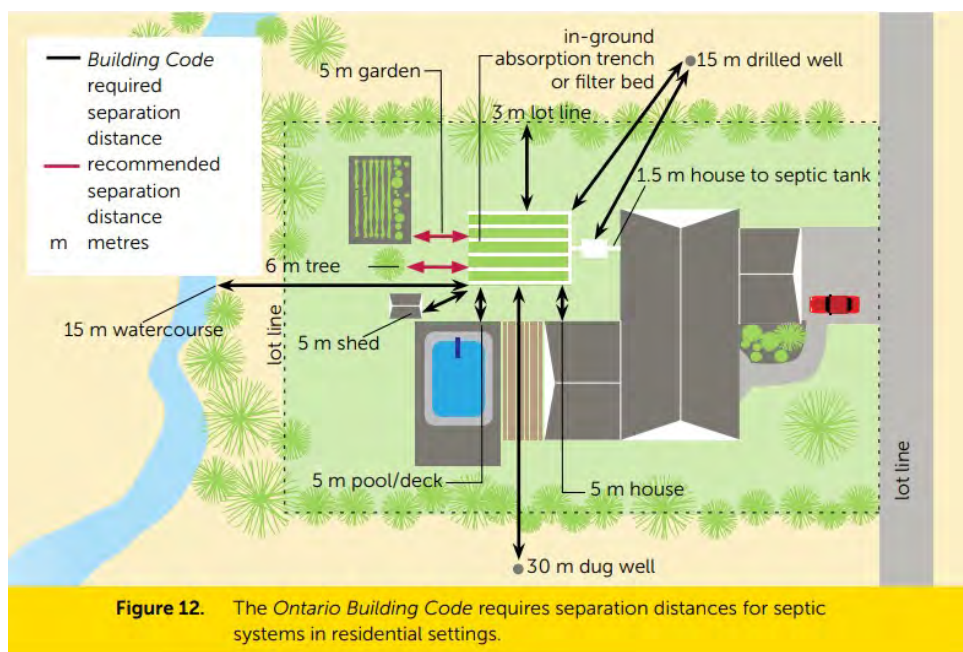
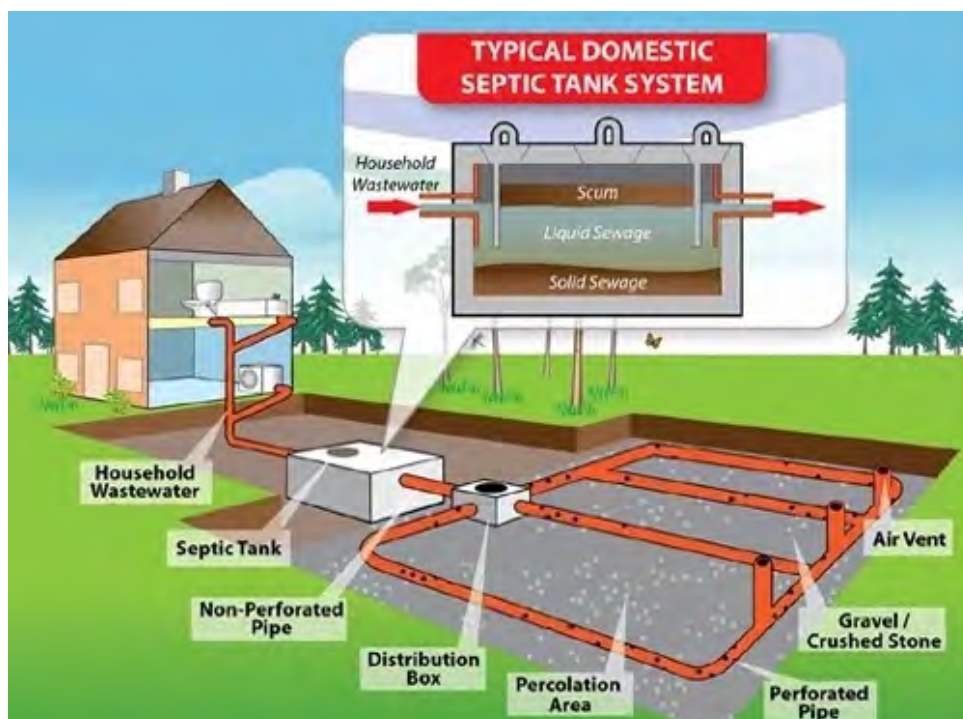


Figure 12. The Ontario Building Code requires separation distances for septic systems in residential settings.

- Familiarize yourself with the location of your system
- Have your tank inspected for sludge and scum buildup on a regular basis (3-5 years) and clean out when a third of the depth of your tank is full of sludge and scum
- Have your effluent filter checked and cleaned every year; if you don't have an effluent filter, consider adding one
- Do not discharge water softener backwash to the septic system unless

your system has been designed for it

- Do not put cooking oils or food waste down the drain
- Do not flush hazardous chemicals, pharmaceuticals, cigarette butts or sanitary products
- Do not plant trees or shrubs too close to the septic tank or distribution system

It is recommended to install risers and a safety screen at each access opening for easier maintenance. (Required on new septic installations)

GLEN WALTER WATER TOWER



The Township of South Glengarry has awarded the construction of the Glen Walter Elevated Water Storage Tank (water tower) to Landmark Structures Co. This project includes the construction of a new elevated water storage tank located adjacent to the Glen Walter Park upper parking lot. The work will include:

- Construction of new composite elevated water storage tank (water tower)
- Installation of new watermain to connect the new tank with the existing system

Construction Work began the week of March 3, 2025 and will continue throughout the year.

This project is part of the Council-approved 2025 Capital Works Program and is supported by the Glen Walter Master Servicing Plan.

If you have questions about the upcoming work, please contact us at 613-347-1166 or infrastructure@southglengarry.com



Rural Roots, Active Routes *Connecting South Glengarry*

The Township is in the process of developing South Glengarry's first Active Transportation and Trails Plan (ATTP).

The ATTP plays a key role in the Township's commitment to promote walking and cycling for short trips within the villages, to key destinations, to boost cycling as a leisure activity on its trails and to promote cycling and destinations within the Township for tourism.

The plan addresses existing gaps in walking and cycling infrastructure, and policy to provide its residents and visitors a safer and more pleasant environment in which they can walk and cycle.

We heard early on in the process, through an online survey and workshop, what was important to the public and stakeholders for the community; these responses were used to prepare the infrastructure, policy, and program recommendations.

We just held an in-person Public Open House on February 20th to highlight these recommendations. Network recommendations focus on community connections and developing the Peanut Line Trail west of Williamstown.

Policy recommendations includes collaboration with SDG Counties and could include finalization of our Township's Traffic Calming Policy, a sidewalk policy or having SDG Counties pave wider sidewalks at the time of road renewals. From a program perspective you could expect to see proposed shorter bike loops, trail head improvements and a bike parking program.

Visit the Township's website to stay up-to-date on the project progress, see the consultation materials previously shared or send your comments. The success of our ATTP depends on input from the community that will directly benefit from having the plan in place.



What to Expect on Township Roads this Spring

The South Glengarry Roads division will be undertaking our annual spring road maintenance. Here's a refresher to help prepare residents for the seasonal road operations that will happen across the municipality throughout the spring/early summer.

All operations are delivered in accordance with Ontario Regulation 239/02, Minimum Maintenance Standards (MMS) and the Township's approved Right-of-Way (ROW) Policy.

Winter Control: From November 1 to April 15, roads employees patrol, plow, sand and salt roads and sidewalks. If winter conditions extend outside of the dates noted above, the Township will still respond as required.

Brushing: Roadside mechanical brushing is a necessary activity for road maintenance. It is important to remove vegetation within the Township owned right-of-way to improve driving conditions on the roads and help with other road maintenance operations such as ditching, and winter operations.

Sweeping: Street sweeping begins in the spring, once winter maintenance operations are fully finished, to remove winter sand and other debris from the road, gutters and roadsides that could potentially block drainage infrastructure.

Grading: The Township continually maintains its gravel roads by grading them as required to correct the grade/cross-fall of the road and to provide a smooth driving surface. Loose top grading typically happens 3 to 5 times annually.

Dust control: Dust control primarily happens in May and June. The work is weather dependent and is contracted out. The contractor uses calcium chloride to prevent dust build up and to help bind the gravel on our roads.

Culvert Maintenance: Often in the spring, ditches and culverts need to be cleared of leaves and other materials that may have piled up over the winter. Culverts allow the passing of water under roads to help keep potholes and cracks from forming. Culvert maintenance is a year-round operation. Late fall/winter is reserved for emergency maintenance and spring/summer for culvert replacements.



Cold Patching: Cold patching potholes happens year-round as temporary fix until further action can be taken.

Hot Patching: Hot patching potholes starts in the late spring and runs through the fall (roughly May to October). Hot patching is a semi-permanent repair; it typically lasts longer than cold patching, but the long-term solution is for the road to be resurfaced through a Capital program.

Other road maintenance operations that you may see this spring: catch basin maintenance, sign maintenance, line marking, guiderail maintenance, roadside mowing, storm sewer flushing, bridge maintenance, streetlight/traffic signals, noxious weeds, and sidewalk/curb maintenance.

ROADSIDE SPRAYING

Locations and contractor: TBA
WATCH OUR WEBSITE AND
SOCIAL MEDIA FOR UPDATES

No Spray Signs

If you do not want the ditches in front of your property to be sprayed, landowners must post 'no spray' signs at the start and finish of the property. The signs must be at least 1 foot by 2 feet in size and be easy to read from the shoulder of the road (about 3 feet from the edge of the gravel shoulder). Spraying is not planned if you mow the ditch in front of your property on a regular basis (if the roadside ditch is maintained like your front lawn).

Spraying is planned to occur from the edge of the gravel shoulder to approximately 1 metre from the fence line.

ATTENTION SOUTH GLENGARRY RESIDENTS!

Are you tidying up, moving, or simply decluttering? Instead of throwing away your gently used items, consider donating them to local organizations that support our community. Many places will happily accept donations, and some even offer pickup services for large items. Your contributions help reduce landfill waste while assisting those in need.

Where to Donate:

- Opportunity Knox – 1 Molan St, Lancaster | ☎ 343-309-5446
- Society of St. Vincent De Paul – 162 Main St. S, Alexandria | ☎ 613-525-3466
- Value Village – 1400 Vincent Massey Dr, Cornwall | ☎ 613-938-0226
- Big Brothers & Big Sisters – 101 Third St W, Cornwall | ☎ 613-933-8035
- Agape Centre – 40 Fifth St W, Cornwall | ☎ 613-938-9297
- The Salvation Army – 401 Fourth St W, Cornwall | ☎ 613-933-7994 ext.124
- Habitat for Humanity ReStore – 1400 Vincent Massey Dr Unit 9, Cornwall | ☎ 613-938-0413
- Don't Forget Animal Shelters! If you have pet items such as beds, blankets, or toys in good condition, consider donating them to local shelters that support animals in need.

A Gentle Reminder:

Before dropping off donations, check each organization's hours to prevent items from being damaged by the elements. Some places have specific needs, so call ahead for a list of accepted donations. By donating, you're not just decluttering—you're making a real difference in your community!



Space provided through a partnership between industry and Ontario municipalities to support waste diversion programs.

Ditch Maintenance

A ditch is an excavated channel in the ground beside the roadway that moves water during storm events and spring melts.

Properties that have ditches adjacent to them share with the Township in the responsibility of their maintenance since the ditches are providing a legal outlet for both the road and the adjacent property.

Rural Properties

Property Owner Responsibilities

- Replacement of deteriorated or damaged culverts

Township Responsibilities:

- Re-establish the grade and slope to the original design to maintain positive drainage as part of a larger maintenance program
- Replace culverts damaged by Township operations
- Cut grass and weeds twice a year
- Removal of debris

Urban/Subdivision Properties

Property Owner Responsibilities

- Removal of debris
- Removal of root infiltration caused by a private tree
- Maintain the boulevard, including cutting grass, weeds, and alike
- Replacement of deteriorated or damaged culverts
- Replacement of deteriorated or damaged filled-in ditch systems (authorized by permit)

Township Responsibilities:

- Re-establish the grade and slope to the original design to maintain positive drainage as part of a larger maintenance program
- Replace culverts damaged by Township operations

REGISTRATION REMINDER: to Water/Wastewater Maintenance Updates

Stay informed on disruptions to water and sewer supply as they may occur unexpectedly. The Township will provide consumers with immediate action steps and ongoing updates throughout the process using our mass notification system.

The Water and Wastewater Division will continue to send notification alerts regarding planned maintenance if any impacts are observed in your neighbourhood.



Voyent Alert

Valve Maintenance and Repair Notice

The Township's ongoing efforts to improve the water system through preventative maintenance and the replacement of linear infrastructure will continue throughout the Summer of 2025. During this time, you may notice our valve trailer exercising valves in various locations. This could lead to temporary fluctuations in water pressure and discoloration of water in certain areas. Before any full shutdowns for replacements, our Mass Notification System (Voyent Alert) will be used to notify registered consumers of upcoming repairs. If you have not registered, please do so to stay informed.



Fire Hydrant Flushing Notice

Fire hydrant flushing is scheduled for early Spring in the Glen Walter and Lancaster Drinking Water Systems within the Township. Advanced warnings will be sent out through our Mass Notification System (Voyent Alert). Customers may experience temporary discoloration in the water. If this occurs, please run the water for several minutes until it clears. There may also be a drop in water pressure during localized flushing. We apologize for any inconvenience this may cause.



St. Raphael's Ruins



In 1970 a fire consumed the church of St. Raphael's, one of the earliest Roman Catholic churches in English-speaking Canada.

Fortunately the outer walls were spared and today its impressive scale and fine masonry work continue to attract the tourists to the site.

The Ruins were declared a National Historic Site in 1999.

Visitors are welcome to tour the site.

Open 7 days a week. Curator on-site Thursday - Monday

9am - 5 pm during summer months

No charge for individuals visiting the site, albeit donations are gratefully accepted.



19998 County Rd 18,
Williamstown
Info@saintraphaelsruins.com



The Royal Canadian Legion

Ontario Branch 544

Claude Nunney V.C Memorial

Dinners Every Friday from 5-6:30 pm

119 Military Rd., Lancaster

Open Daily at 1 pm

RESERVATIONS REQUIRED FOR ALL MEALS

613-347-3286

www.lancasterlegion.com

Seconds Save Lives Are You Ready?

A fire can spread in just minutes—make sure your home is prepared!

- Plan Your Escape – Know two ways out of every room and practice fire drills with your family.
- Check Your Smoke & CO Alarms – Test monthly, replace batteries yearly, and install alarms on every level of your home.
- Is Your Address Visible? – Make sure your house number is clear so emergency responders can find you fast!



FIRE SERVICES

**South Glengarry Fire Services
Protecting What Matters Most!**

Backyard Burning? Know the Rules



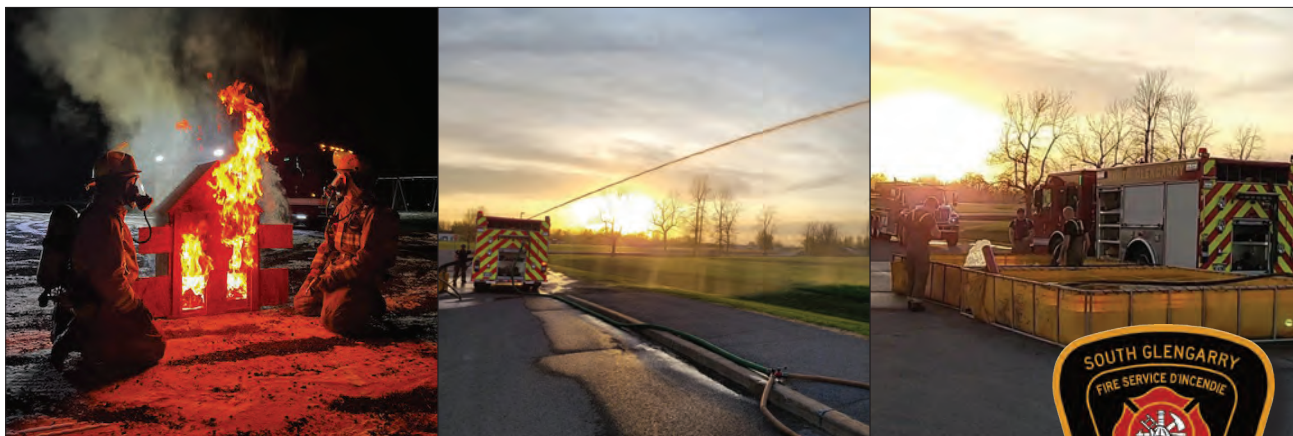
Spring and summer bring yard cleanups and cozy campfires—but fire safety comes first!

- Keep Fires Safe & Under Control – Always have a water source nearby, never leave a fire unattended, and ensure it's completely out before leaving.
- Check the Weather – High winds? Dry conditions? Postpone your burn to prevent wildfires.

Burn Permits Are
FREE & Required.
Scan the QR code
to get yours.



**South Glengarry Fire Services –
Keeping Our Community Safe!**



Emergency Services



FIRE SERVICES

DAVE ROBERTSON

JASON VAUGHAN

STATION #1 – GLEN WALTER

STATION #2 – MARTINTOWN

STATION #3 – WILLIAMSTOWN

STATION #4 – LANCASTER

STATION #5 – NORTH LANCASTER

Fire Chief 613-347-1166 EXT 2441

Deputy Fire Chief/Training Officer 613-347-1166 EXT 2442

Station Chief – Brian Poirier Senior Captain – Chris Kentell

Station Chief – Rodney Kenny Senior Captain – Dave Mason

Station Chief – Chad Warden Senior Captain – Mike McDonnell

Station Chief – Dan Cholette Senior Captain – Ryan MacDonald

Station Chief – Rock Rozon Senior Captain – Alan Benson

BURN PERMIT ACTIVATIONS <https://sg.burnpermits.com/> 613-703-5015

ANIMAL CONTROL

KEVIN CASSELMAN, Animal Control Officer 343-585-4065

EMERGENCY AFTER HOUR SERVICES

ROADS EMERGENCY 1-888-310-1122

WATER/WASTEWATER EMERGENCY 613-551-4457

IMPORTANT RESIDENT SERVICES

EASTERN ONTARIO HEALTH UNIT 1-800-267-8260

HYDRO ONE EMERGENCIES (OUTAGES/FALLEN TREES/HAZARDS) 1-800-434-1235

CORNWALL ELECTRIC (POWER OUTAGES) 1-844-701-9473

ONTARIO ONE CALL – CALL BEFORE YOU DIG 1-800-400-2255

RAISIN REGION CONSERVATION AUTHORITY 613-938-3611

UNITED COUNTIES OF STORMONT, DUNDAS, & GLENGARRY 613-932-1515

CN PUBLIC INQUIRY LINE 1-888-888-5909

CN POLICE 1-800-465-9239

OPP DETACHMENT (LANCASTER) 613-347-2449

911

EMERGENCY

FIRE - POLICE - MEDICAL



GROUPE INTER-AGENCE

Glengarry

INTER-AGENCY GROUP

613-525-1533

Integrated Employment Services d'emploi intégrés

Job search, resume writing and career exploration.

Recherche d'emploi, rédaction de CV et exploration de carrière.

✉ employment@giag.ca

The Learning Centre (TLC) - Service de garde

Educational before and after school program.

Programme d'éducation avant et après l'école.

✉ tlcinfo@giag.ca

Early ON - ON Y VA

Provide leadership by supporting parents and our communities in raising children.

Soutenir les parents et nos communautés dans l'éducation des enfants.

✉ oeycornwall@giag.ca

Seniors' Program - Programme pour ainé(es)

Enhancing seniors' physical, intellectual and social needs.

Vise à maintenir et améliorer la santé physique et mentale des personnes âgées.

✉ seniors@giag.ca

Youth In Transition Worker Program - Programme IJT

Supporting youth transitioning from child welfare programs into adulthood.

Pour les jeunes en transition des systèmes de protection de l'enfance.

✉ yitw@giag.ca



RE/MAX
AFFILIATES MARQUIS LTD. BROKERAGE
INDEPENDENTLY OWNED AND OPERATED



649 Second Street E. Cornwall ON K6H 1Z7 www.tprealty.ca



Lyle Warden

Realtor®

lylewarden@outlook.com

613-551-0057

Donna Primeau

Realtor®

dprimeau@remaxmarquis.ca

613-361-2508

Jamie MacDonald

Realtor®

jamiemacdonald@remaxmarquis.ca

613-551-8691



we know
SOUTH GLENGARRY