

South Glengarry Zoning By-law #38-09

"As Amended"

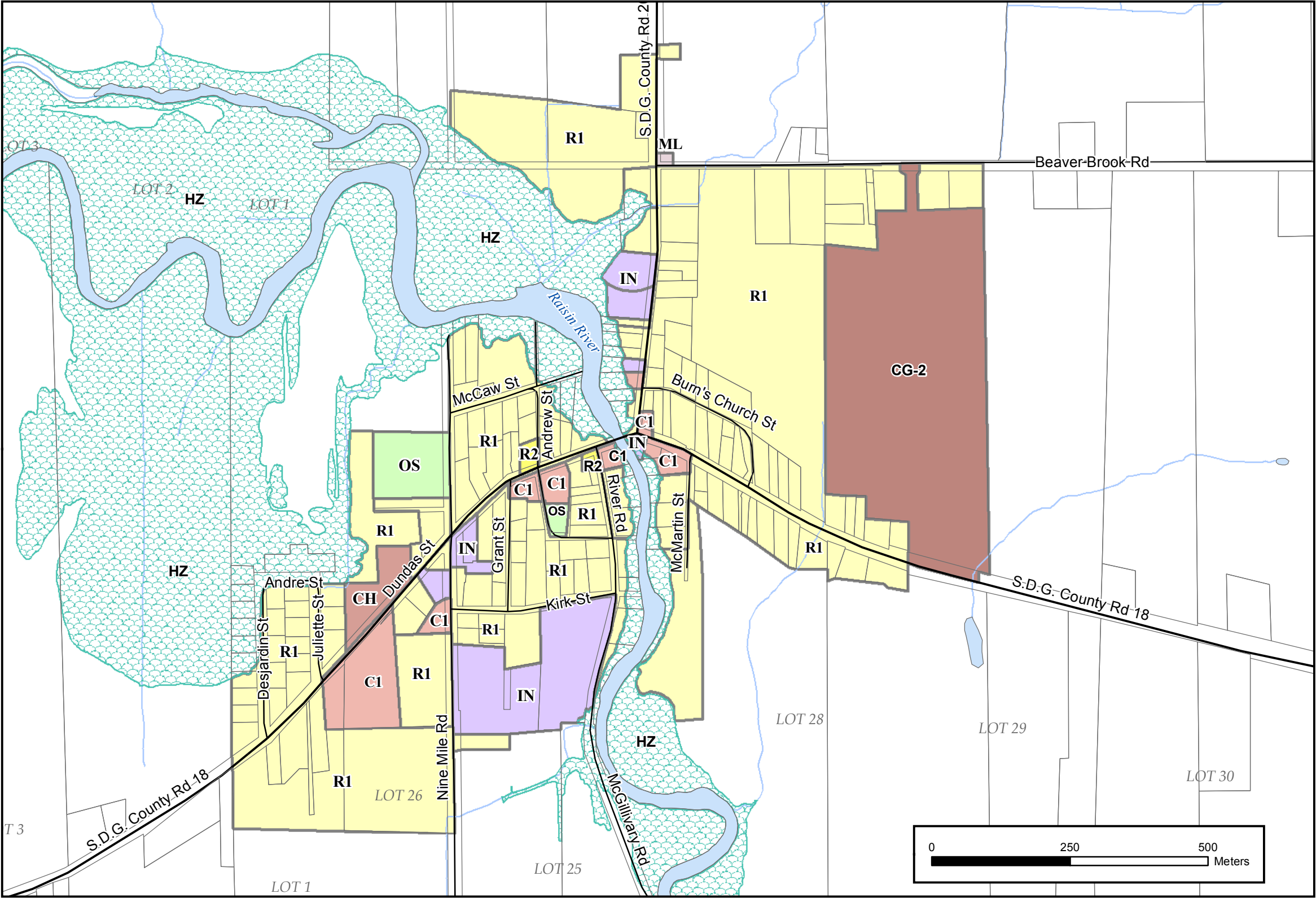
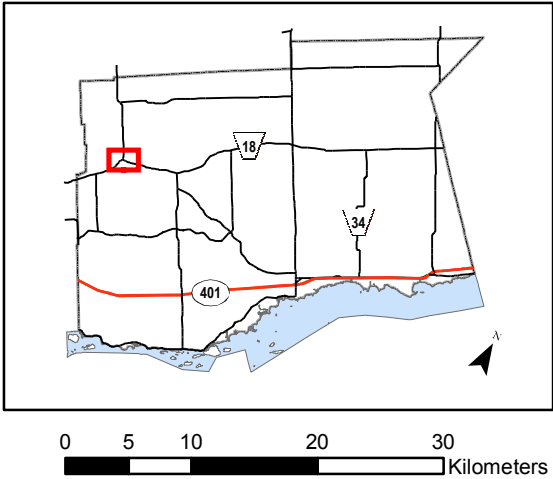


Martintown

- Parcels
- Highway
- County Road
- Other Roads
- Railroad
- PowerLine
- Oil/Gas Pipeline

1:7,500

Township of South Glengarry
Key Map



Legend

- | | | |
|-----------------------|------------------------|--------------------|
| Residential, R1 | Highway Commercial, CH | Institutional, IN |
| Residential, R2 | General Commercial, CG | Natural Hazard, HZ |
| Hamlet Commercial, C1 | Light Industrial, ML | |
| | Open Space, OS | |



Schedule
RS-1



United Counties of Stormont Dundas and Glengarry

The United Counties of Stormont, Dundas & Glengarry, its employees, or agents, do not undertake to guarantee the validity of the contents of this digital or hardcopy map and will not be liable for any claims of damages or loss arising from its application or interpretation, by any party. It is not intended to replace a survey or be used for legal description.

Date: August 16, 2010