

# South Glengarry Zoning By-law #38-09

"As Amended"

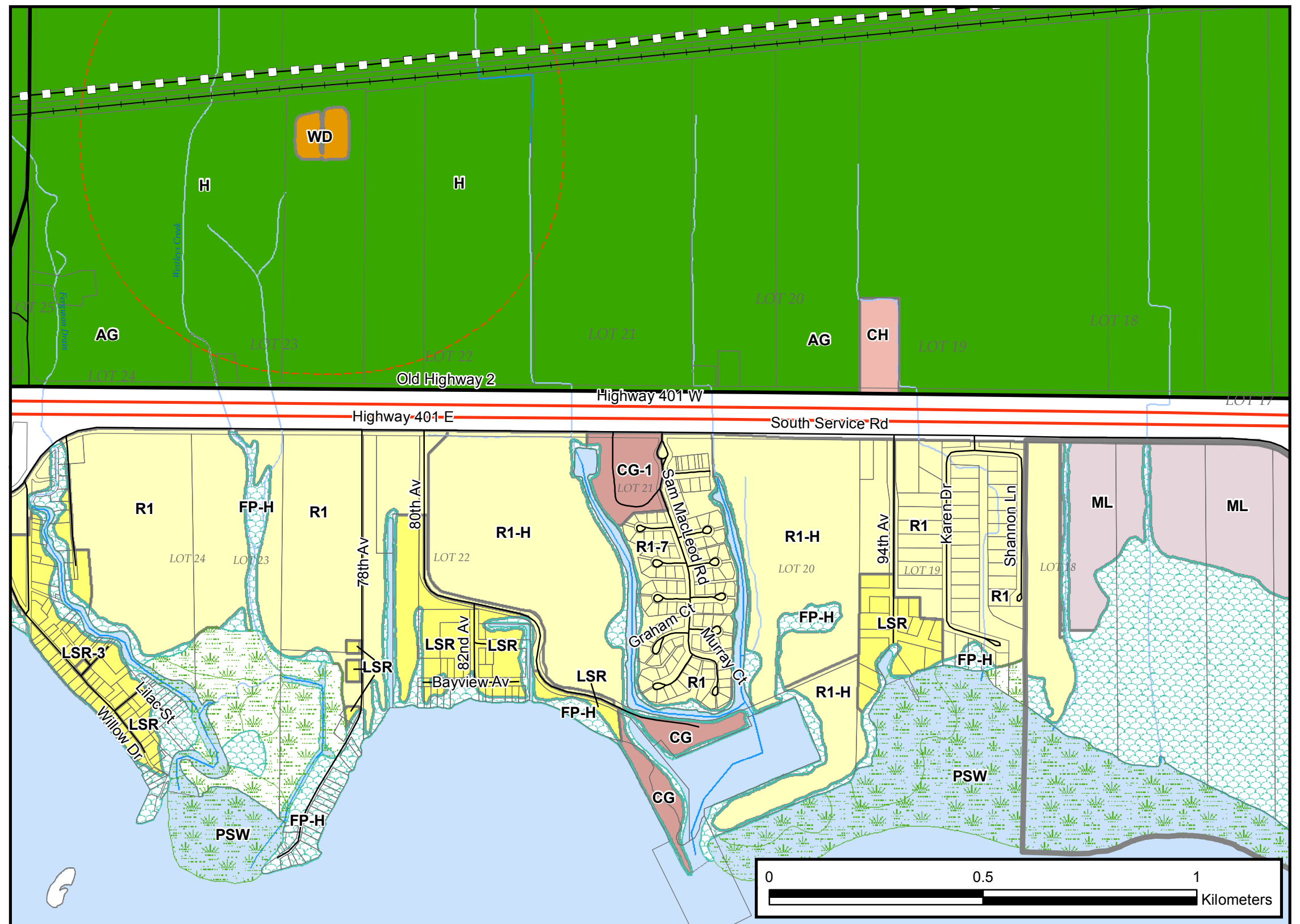
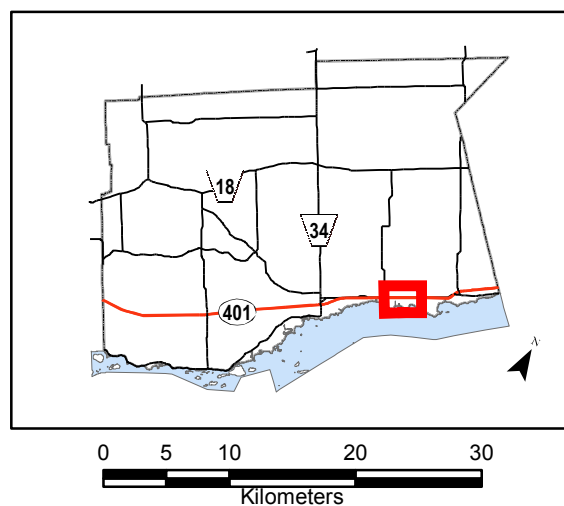


## St. Lawrence Shoreline Part 12

- Parcels
- Highway
- County Road
- Other Roads
- Railroad
- PowerLine
- Oil/Gas Pipeline

1:10,000

### Township of South Glengarry Key Map



### Legend

- |                                  |                                       |                         |
|----------------------------------|---------------------------------------|-------------------------|
| Residential, R1                  | As per OPA #2                         | Waste Disposal Zone, WD |
| Limited Service Residential, LSR | Agricultural, AG                      | Waste Influence Area, H |
| General Commercial, CG           | Rural, RU                             |                         |
| Highway Commercial, CH           | Provincially Significant Wetland, PSW |                         |
| Light Industrial, ML             | Floodplain Holding Zone, FP-H         |                         |

**Schedule  
S-12**



### United Counties of Stormont Dundas and Glengarry

The United Counties of Stormont, Dundas & Glengarry, its employees, or agents, do not undertake to guarantee the validity of the contents of this digital or hardcopy map and will not be liable for any claims of damages or loss arising from its application or interpretation, by any party. It is not intended to replace a survey or be used for legal description.

Date: August 16th, 2010