



Welcome!

Active Transportation and Trails Plan

Public Open House
February 20, 2025 | 17:30 – 19:30

What are we talking about?

What is an Active Transportation and Trails Plan (ATTP)?

A long-range strategy document that guides the planning, implementing, operating and maintaining of the active transportation network and supporting policies and programs.

The ATTP is a living document, meaning that it can change as the community needs change and evolve.

Why is it important?

Active transportation helps create a **healthier, more vibrant** and **connected** community by fostering an environment that supports and encourages active forms of transportation making them a **convenient, safe** and **enjoyable** option improving **mobility** and **health** of residents and visitors who then **support local tourism** and **businesses**.

What an ATTP is NOT

- Commitment of budget
- Prescriptive set of projects
- Final design of infrastructure
- Required policy change

What is our Vision?

Our vision is to create a community in South Glengarry where walking, cycling and rolling are a part of life, contributing to sustainable use of the Town's assets, embracing and providing the experience of the natural elements of the area outside a vehicle, and providing a benefit to its tourism economy and the health and well-being of its residents of all ages.

Project Progression

1 Review of Opportunities

- Review Background information and existing policies
- Inventory of existing and proposed facilities
- Identify key destinations and opportunities for community use of active transportation
- Identify current trips being made within the community both for work and fun
- Identify key potential links within the network

2

Consultation

- Launch public survey
- Stakeholder workshop
- Summarize input for network and project development

3

Preparation of network & Identification of Projects

- Identify preferred network and facility types
- Develop project list
- Prioritize projects and develop implementation strategy
- Identify potential policy and program initiatives for the community

4

Consultation

- Public Open House
- Summarize input from community to finalize plan

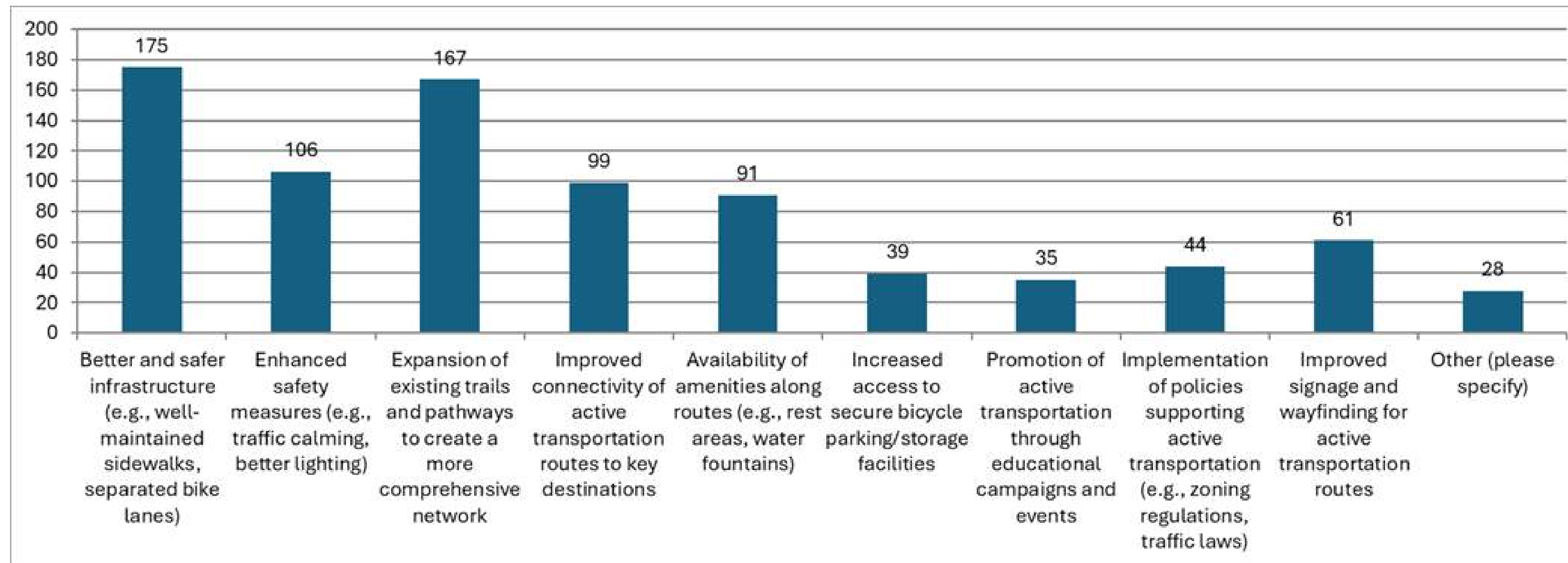
5

Development of Active Transportation and Trails Plan

- Refinements to proposed plan based on comments received and development of draft report
- Confirm network phasing for short- and long-term timing horizons
- Project costing
- Presentation to Council
- Final report

Consultation Round 1: What did we hear?

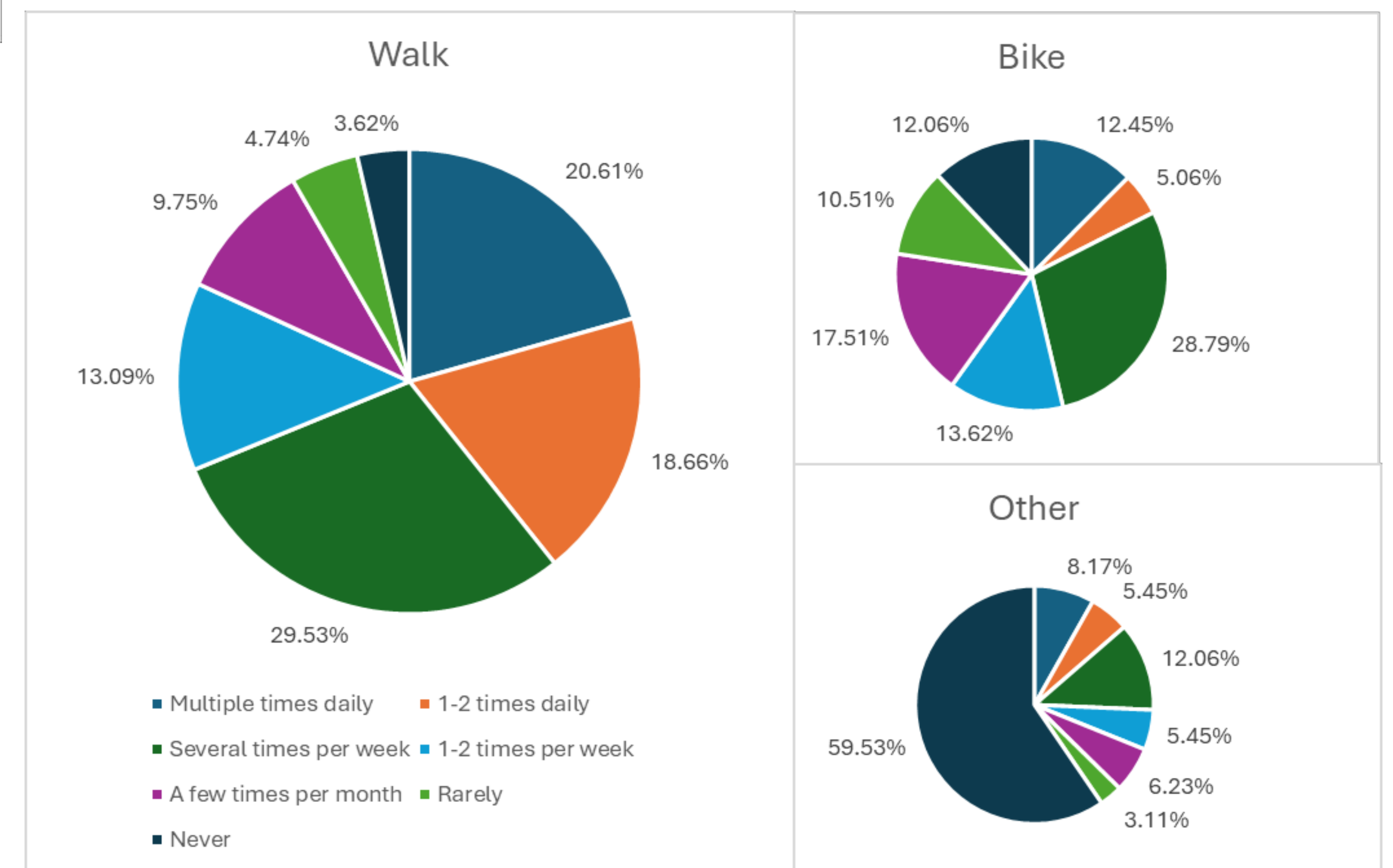
Improvements that would encourage you to use active transportation modes more frequently *



Influencing factors to NOT walk or bike



How often active transportation modes are being used within your community



When you use active transportation and for what reason *



Key Destinations

Peanut Line
Waterfront Trail
Local Artisan Businesses
Fairgrounds
Raisin Region Conservation Authority Trail Network
Restaurants / Pubs / Bakeries
Summerstown Trail
Schools
Community Centres
Waterfront

* Could be more than one answer

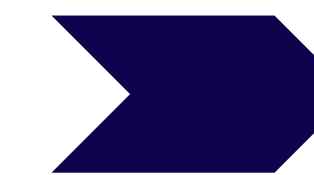
How do we identify projects and their priority?

Look for opportunities and constraints for where a facility could go

- Peanut Line Trail and Waterfront Trail.
- Unopened road allowances.
- Trips for tourism, recreation and short trips within villages.
- Highway 401 and roads owned and operated by other agencies are barriers.

Identify the best facility type for the context

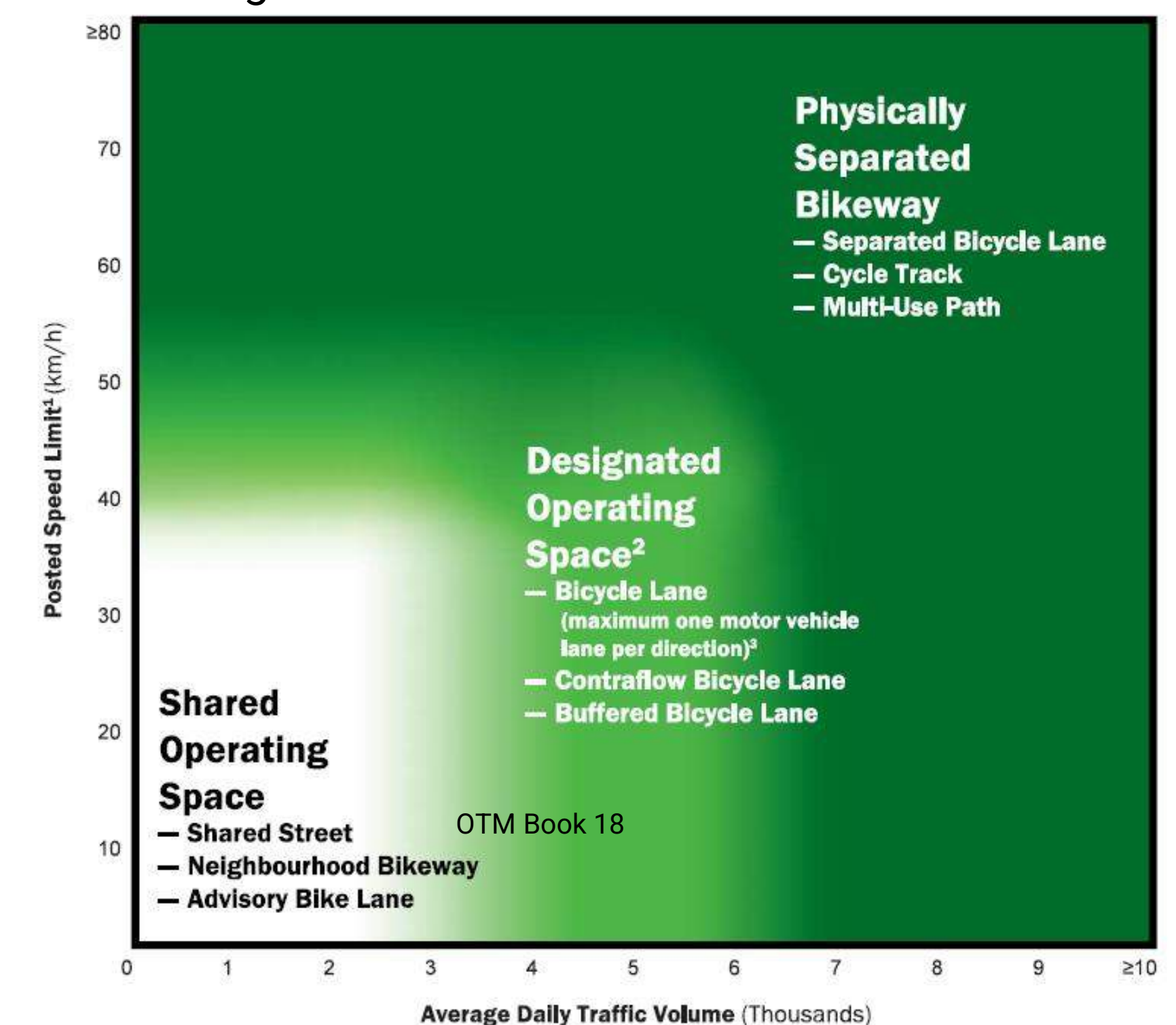
- Review who owns/maintains the road (e.g. County, Township).
- Utilize existing guidance to identify what separation is recommended based on traffic speed and volume.
- Consider the existing right-of-way and any constraints within the corridor that would limit what can be built such as large tree, hydro poles and other utilities, drainage ditches, property limits and road surface (e.g. gravel, paved).



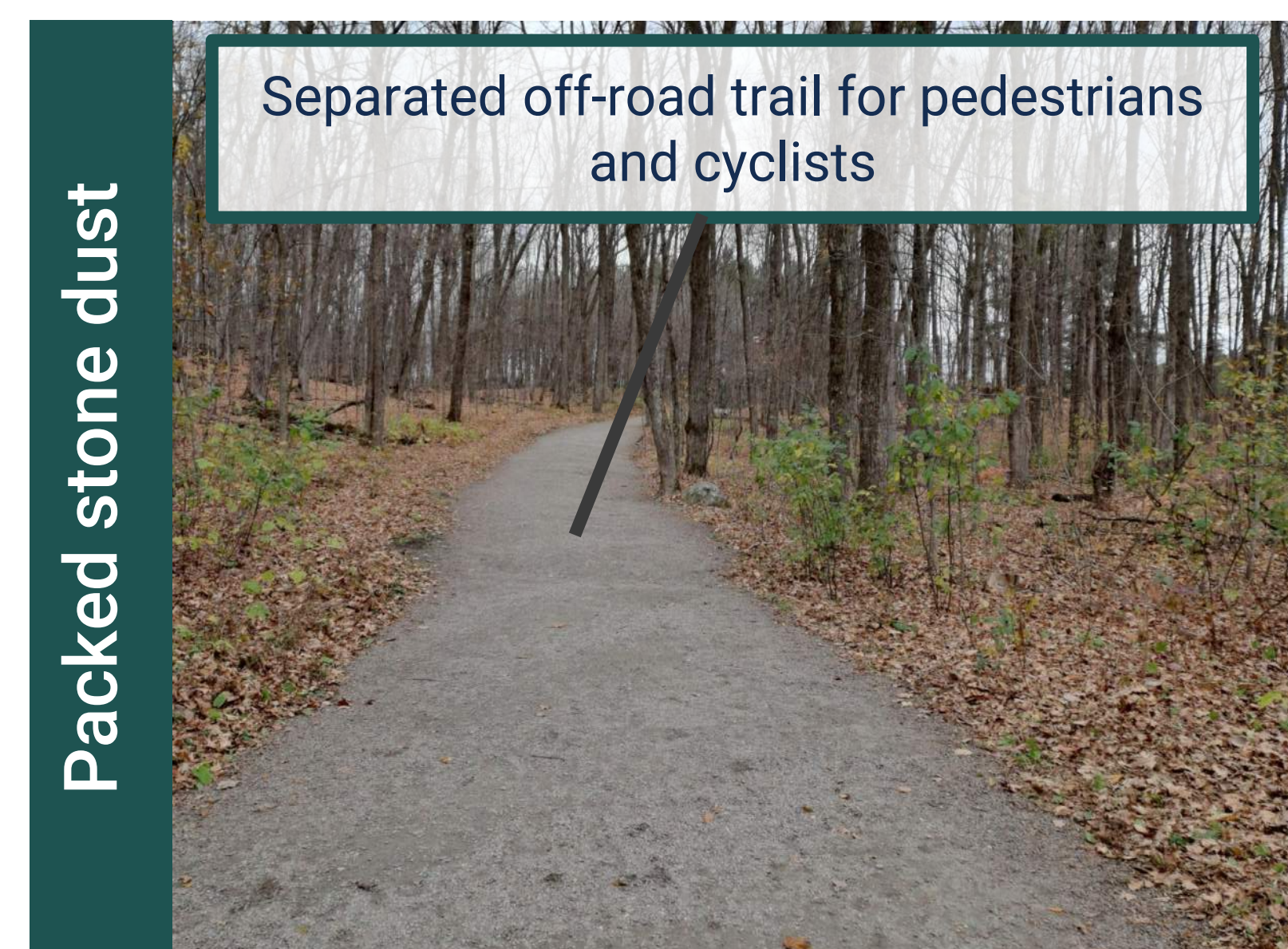
Prioritize what facilities should be built first

- Which projects connect the most users?
- Which projects can be carried out with other planned infrastructure projects for cost efficiency?
- Which projects have the biggest benefit to the community?
- Which projects can the Township carry out independently?
- Which projects provide opportunities to promote tourism and recreational use?

Image Source: Ontario Traffic Manual Book 18



What could the network look like....



Rural Roots, Active Routes

Connecting South Glengarry

NETWORK RECOMMENDATIONS
South Glengarry
Active Transportation and Trails Plan
February 20, 2025

Network Recommendations

- PXO locations
- ▬ Sidewalk
- ▬ Multi-Use Pathway
- ▬ Cycle Track
- ▬ Painted Bike Lane
- ▬ Packed Stone Dust
- ▬ Paved Shoulder
- ▬ Signed Cycling Route

Other Features

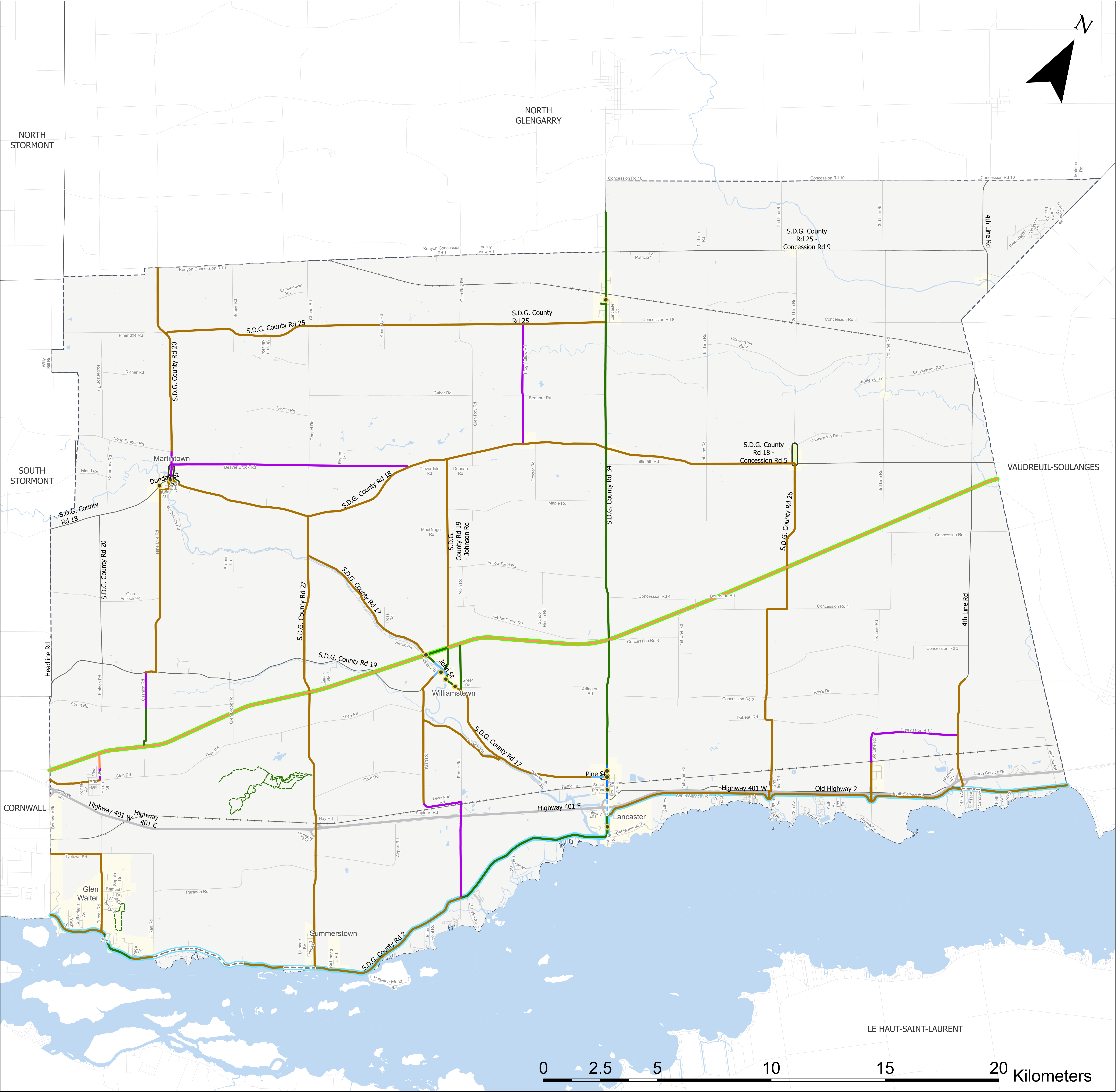
- ▬ Peanut Line Trail
- ▬ Great Lakes Waterfront Trail

Existing Cycling Network

- ▬ Bike Lane
- ▬ Paved Shoulder
- ▬ Off-Road Trails

South Glengarry Road Network

- ▬ Provincial Highway
- ▬ County Road
- ▬ Municipal Road
- ▬ Rail Corridor



Rural Roots, Active Routes Connecting *South Glengarry*

NETWORK RECOMMENDATIONS

South Glengarry

Active Transportation and Trails Plan

February 20, 2025

Network Recommendations

- PXO locations
- Sidewalk
- Multi-Use Pathway
- Cycle Track
- Painted Bike Lane
- Packed Stone Dust
- Paved Shoulder
- Signed Cycling Route

Other Features

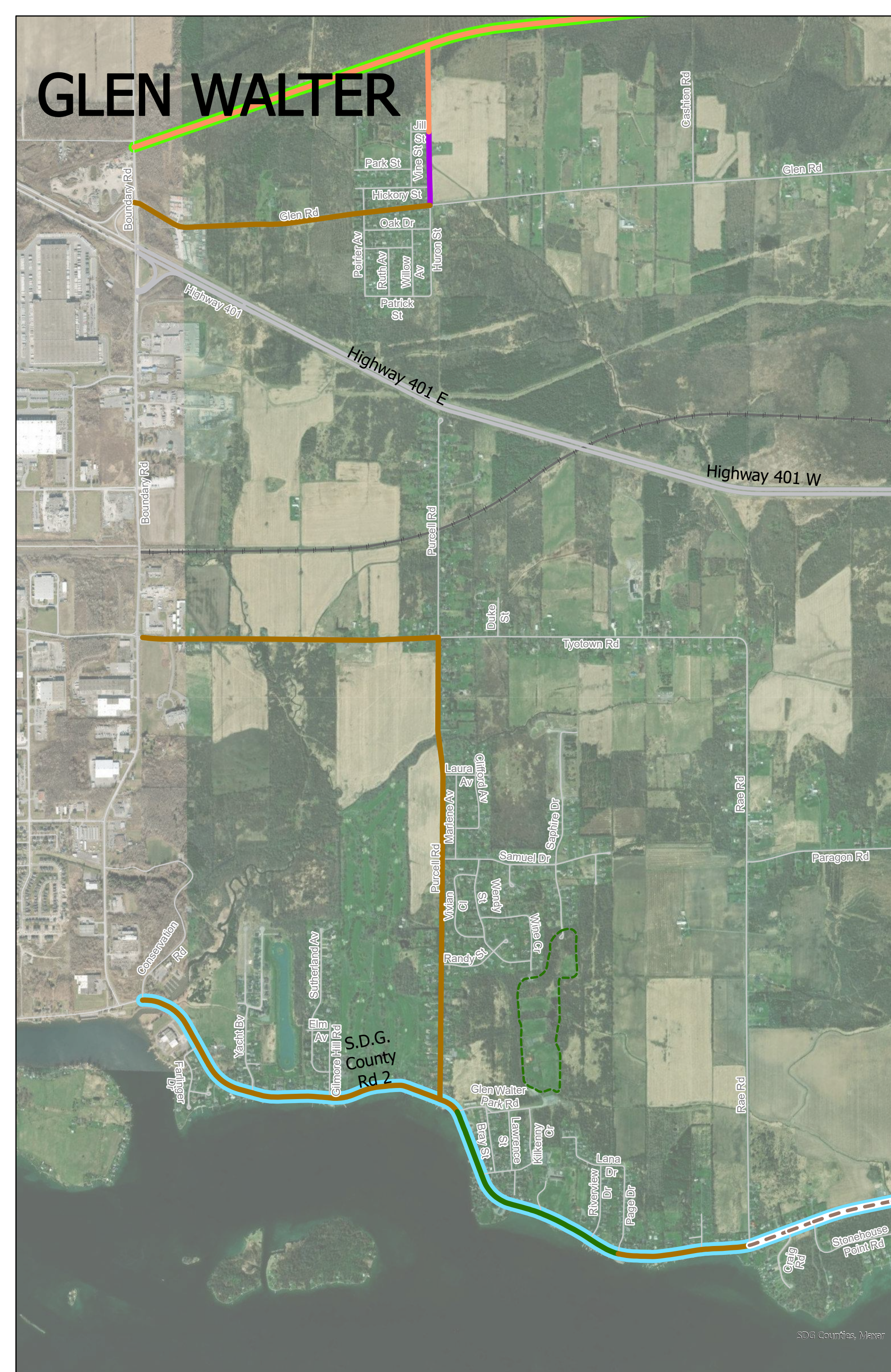
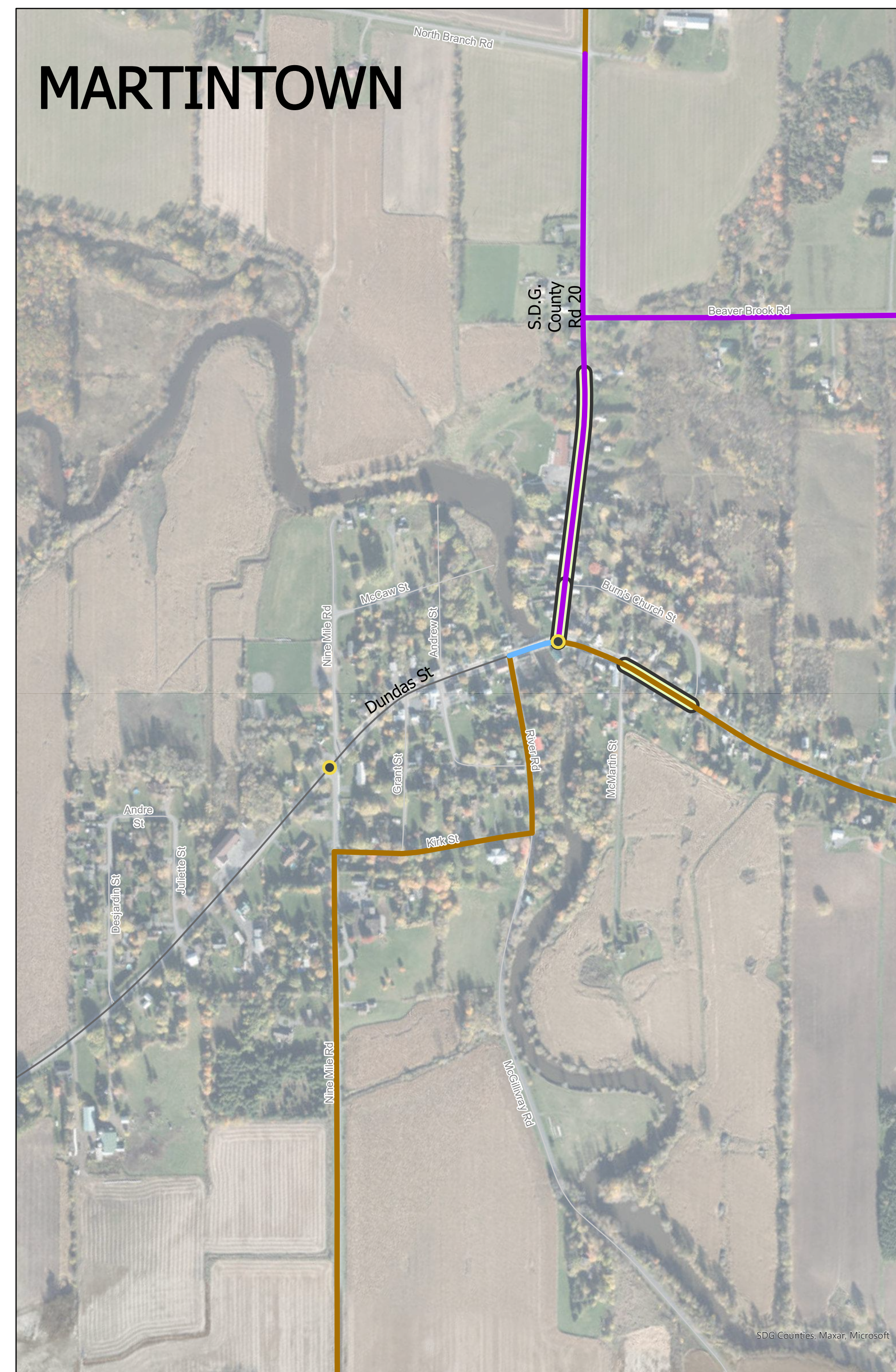
- Peanut Line Trail
- Great Lakes Waterfront Trail

Existing Cycling Network

- Bike Lane
- Paved Shoulder
- Off-Road Trails

South Glengarry Road Network

- Provincial Highway
- County Road
- Municipal Road
- Rail Corridor



Robinson Consultants

C:\Projects\24124018\04 Analysis\GIS\South Glengarry ATP Mapping Rev1.aprx

Rural Roots, Active Routes Connecting *South Glengarry*

NETWORK RECOMMENDATIONS

South Glengarry

Active Transportation and Trails Plan

February 20, 2025

Network Prioritization

PXO Prioritization

- Medium
- High

Cycling Facility Prioritization

- Low
- Medium
- High

Existing Cycling Network

- Bike Lane
- Paved Shoulder
- Off-Road Trails

Other Features

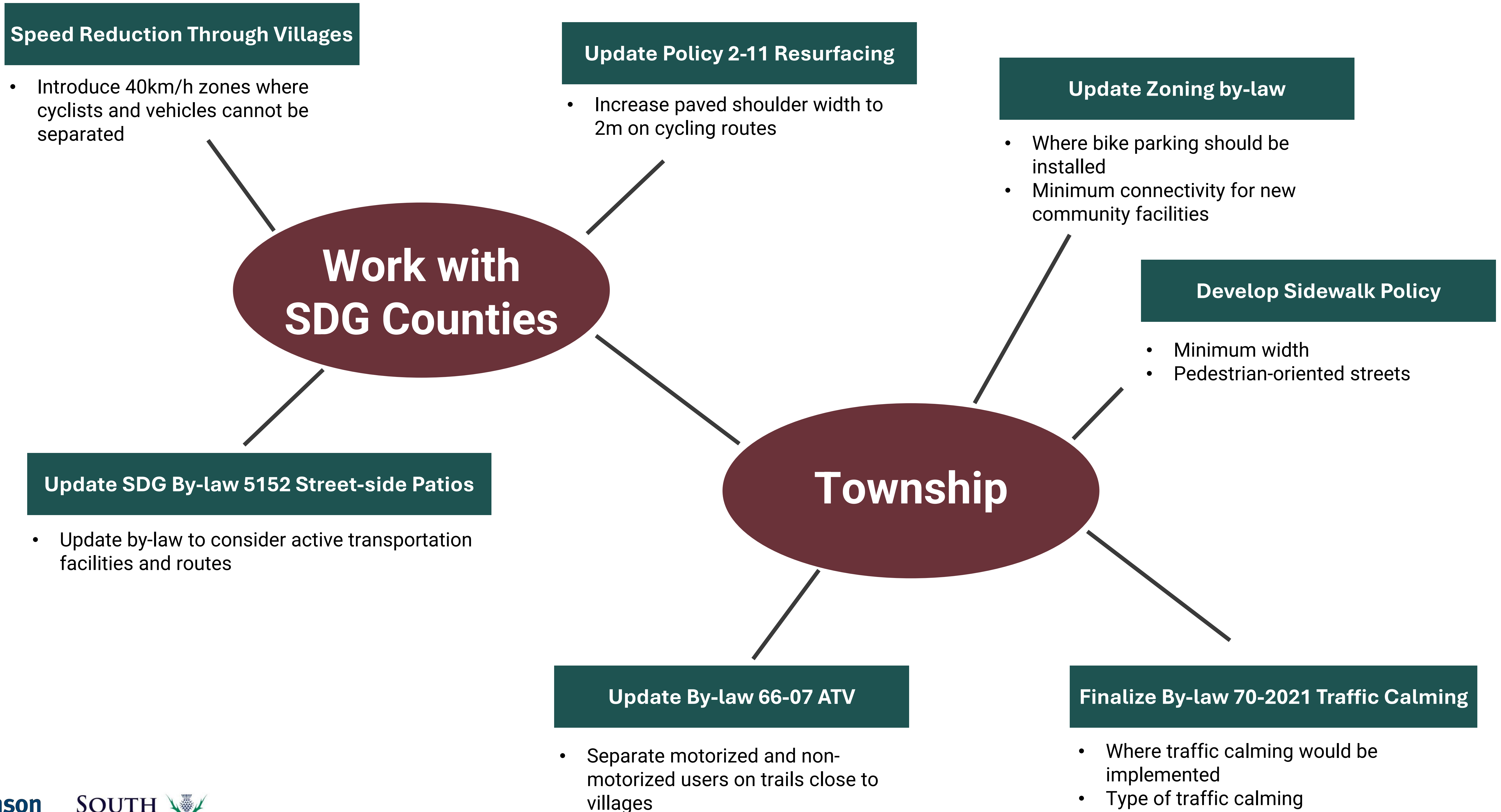
- Peanut Line Trail
- Great Lakes Waterfront Trail
- Rail Corridor

South Glengarry Road Network

- Provincial Highway
- County Road
- Municipal Road



Policy recommendations



What programs would you like to see in your community?



I love this idea:



I love this idea:



I love this idea:



I love this idea:



I love this idea:



I love this idea:

What programs would you like to see in your community?

Bike parking program



I love this idea:

Wayfinding strategy



I love this idea:

Trail head improvements



I love this idea:

Community walk and bike rides



I love this idea:

Community events



I love this idea:

Shorter bike loops



I love this idea:

Rural Roots, Active Routes

Connecting South Glengarry

BIKE LOOP RECOMMENDATIONS
South Glengarry
Active Transportation and Trails Plan
February 20, 2025

- Bike Loop Recommendations
- Bike Loop 1 (2.4km)
 - Bike Loop 2 (5.2 km)
 - Bike Loop 3 (7.2 km)
 - Bike Loop 4 (8.1 km)
 - Bike Loop 5 (10.0 km)
 - Bike Loop 6 (29.0 km)
 - Bike Loop 7 (17.0 km)
 - Proposed Trailhead Parking
- Other Features
- Peanut Line Trail
 - Great Lakes Waterfront Trail
 - SDG Cornwall Adventure Club Cycling Loops
 - Existing Off-Road Trails
 - Rail Corridor
- South Glengarry Road Network
- Provincial Highway
 - County Road
 - Municipal Road



Where do we go from here...

- Gather comments from the community until March 3rd.
- Using discussions from this session and comments received, the network, policy, and program recommendations will be refined and reviewed for priority.
- Projects will be costed and a proposed budget for implementation will be discussed with Township staff.
- A draft report documenting the process, proposed projects, policy and programs will be prepared.
- The draft report will be presented to Township Council; this meeting is open to the Public.
- The final South Glengarry Active Transportation and Trails Plan will be prepared.

Check out the website

Public Open House displays and maps will be posted on the Township's website



Scan for Website



Scan for Comment Sheet

Contact the project team

We want to hear from you! Please send your comments to:

Sarah McDonald, P. Eng.
General Manager, Infrastructure Services
Township of South Glengarry
smcdonald@southglengarry.com

Kim Hunton, P. Eng.
Manager of Transportation Planning
Robinson Consultants
khunton@rcii.com