

South Glengarry Zoning By-law #38-09

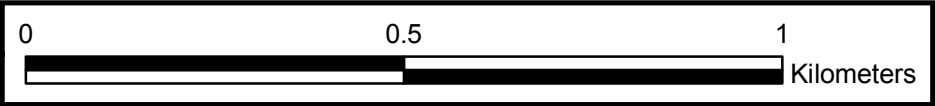
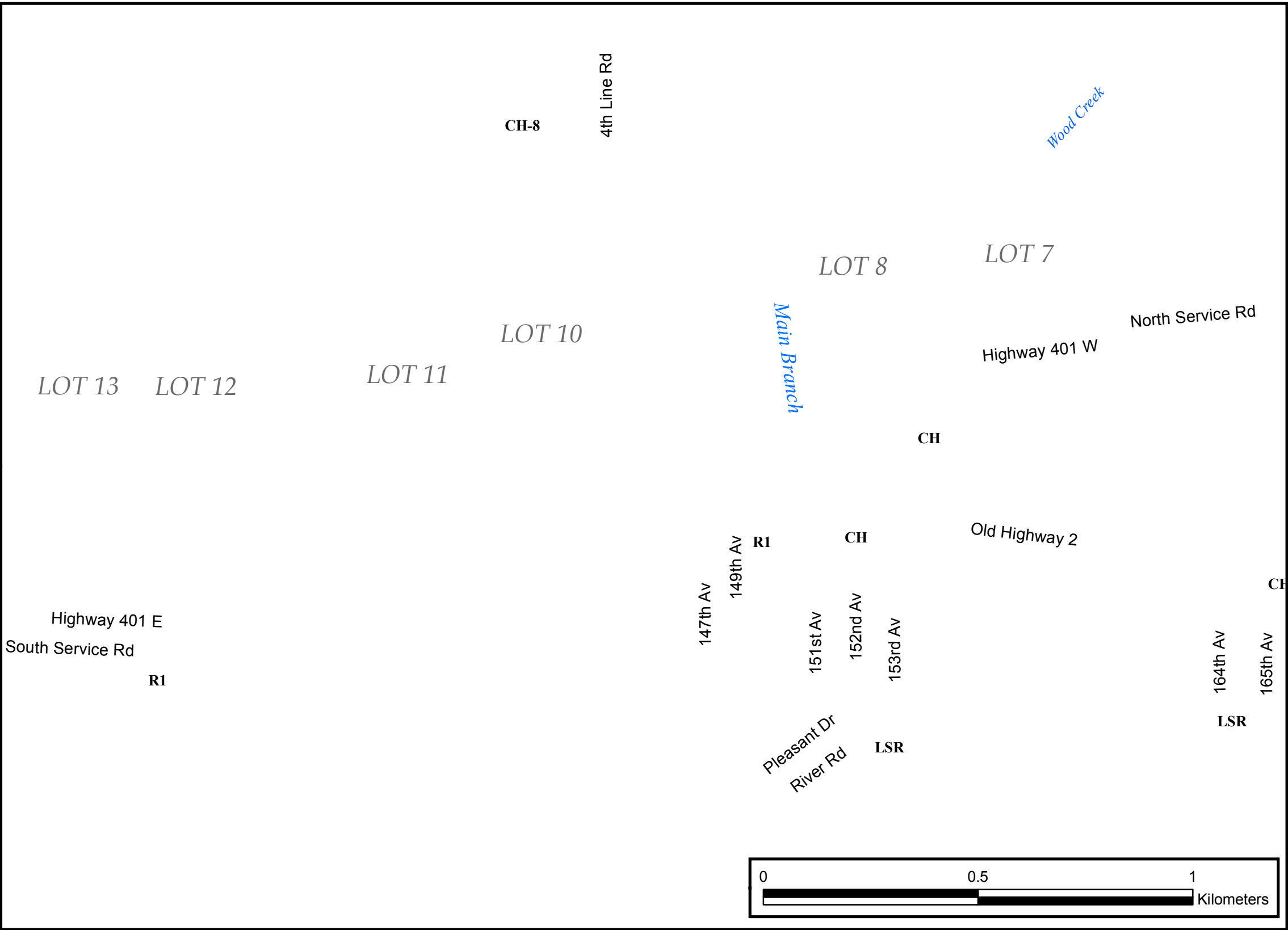
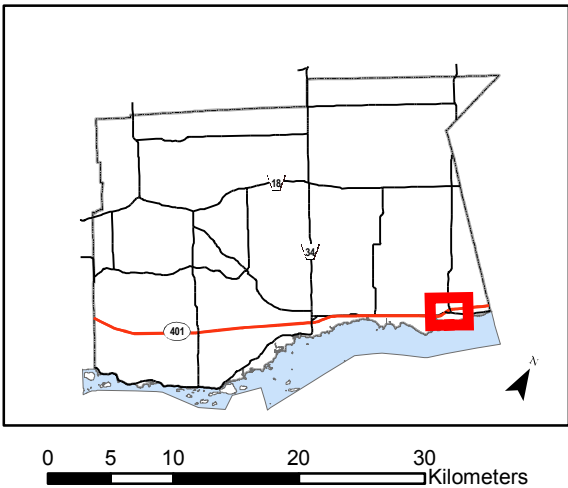
"As Amended"



St.Lawrence Shoreline Part 14

- Parcels
 - Highway
 - County Road
 - Other Roads
 - Railroad
 - PowerLine
 - Oil/Gas Pipeline
- 1:10,000

Township of South Glengarry
Key Map



Legend

Residential, R1	Light Industrial, ML	Floodplain Holding Zone, FP-H
Limited Service Residential, LSR	Rural Zone, RU	Provincially Significant Wetland, PSW
Highway Commercial, CH	Agricultural Zone, AG	

Schedule S-14

**United Counties of
Stormont Dundas and Glengarry**

The United Counties of Stormont, Dundas & Glengarry, its employees, or agents, do not undertake to guarantee the validity of the contents of this digital or hardcopy map and will not be liable for any claims of damages or loss arising from its application or interpretation, by any party. It is not intended to replace a survey or be used for legal description.

Date: August 16th, 2010